

**A REGULAR MEETING OF THE BOARD OF DIRECTORS
OF THE TWENTYNINE PALMS WATER DISTRICT
72401 HATCH ROAD, TWENTYNINE PALMS, CA 92277**

JULY 26, 2017 / 6:00 P.M.

AGENDA

This meeting may be viewed on the District's website at www.29palmswater.net

Next Resolution #17-12
Next Ordinance #98

Call to Order and Roll Call

Pledge of Allegiance

Additions/Deletions to the Agenda

Public Comments

Please complete a "Request to be Heard" form prior to the start of the meeting. The public may address the Board for 3 minutes on District-related matters. Government Code prohibits the Board from taking action on matters that are not on the agenda. However, the Board may refer matters for future consideration.

Local Hazard Mitigation Plan Open Comments

1. Approval of the Twentynine Palms Water District Local Hazard Mitigation Plan
2. California Special Districts Association 2017 Board of Directors Election
3. Review Proposals and Award Bid for a 2017 Ford 250 4 X 4
4. Discussion and Possible Action to Change the Date of the September 2017 Board of Directors Meeting
5. Well 11B California Environmental Quality Act (CEQA)
6. Discussion of Pharmaceutical Disposal
7. Consent Calendar

Matters under the Consent Calendar are to be considered routine and will be enacted in a single motion. There will be no separate discussion of these items unless the Board, staff or the public requests specific items be removed for separate discussion and action before the Board votes on the motion to adopt.

 - Minutes of the Regular Meeting held on June 28, 2017
 - Audit List
8. Items Removed from the Consent Calendar for Discussion or Separate Action

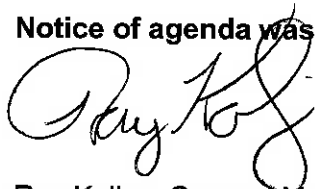
9. Management Reports
 - 9.1 Operations
 - 9.2 Finance
 - 9.3 General Manager

10. Future Agenda Items and Staff Tasks/Directors' Comments and Reports

11. Adjournment

The Board reserves the right to discuss only or take action on any item on the agenda.

Notice of agenda was posted on or before 4:00 p.m., July 21, 2017.



Ray Kolisz, General Manager

Upon request, this Agenda will be made available in appropriate alternative formats to persons with disabilities, as required by Section 202 of the Americans with Disabilities Act of 1990. Any person with a disability who requires a modification or accommodation in order to participate in a meeting should direct such request to Cindy Fowlkes at (760) 367-7546 at least 48 hours before the meeting, if possible.

Pursuant to Government Code Section 54957.5, any writing that: (1) is a public record; (2) relates to an agenda item for an open session of a regular meeting of the Board of Directors; and (3) is distributed less than 72 hours prior to that meeting, will be made available for public inspection at the time the writing is distributed to the Board of Directors. Any such writing will be available for public inspection at the District offices located at 72401 Hatch Road, Twentynine Palms, CA 92277. In addition, any such writing may also be posted on the District's website.

1

TWENTYNINE PALMS WATER DISTRICT
72401 HATCH ROAD, TWENTYNINE PALMS, CA 92277-2935
760.367.7546 PHONE 760.367.6612 FAX

TO: BOARD OF DIRECTORS
DATE: JULY 21, 2017
FROM: RAY KOLISZ, GENERAL MANAGER
SUBJECT: REVIEW AND CONSIDERATION TO APPROVE THE LOCAL HAZARD
MITIGATION PLAN

SUMMARY

The District has been working with Gary Sturdivan to prepare a Local Hazard Mitigation Plan (LHMP) for the Twentynine Palms Water District. This process began in December 2016 and included an internal and external committee that conducted meetings on a monthly basis. The progress of the LHMP has been posted on the District's website and there has been an opportunity for public comment on the plan at the District's monthly Board of Directors Meetings.

Attached for your review is the final version that will be sent to the California Governor's Office of Emergency Services (CalOES) for their review and approval. Following the approval from CalOES staff will bring back the LHMP to the Board for adoption.

RECOMMENDATION

Approve the Twentynine Palms Local Hazard Mitigation Plan.



Twentynine Palms
Water District

Local Hazard Mitigation Plan
Twentynine Palms Water District
Twentynine Palms, California

Twentynine Palms Water District's Board Adoption Date: XX-XX-XXXX

Approved by CalOES: XX-XX-XXXX

Revised:

PRIMARY POINT OF CONTACT UNTIL FEMA APPROVAL

GARY STURDIVAN

GSTURDIVAN@ME.COM

909-658-5974

Primary Point of Contact, AFTER FEMA APPROVAL:

Ray Kolisz

Twentynine Palms, CA

San Bernardino County, CA

(760) 367-7546 (office)

Table of Contents

Section 1 Introduction	6
1.1 Purpose of the Plan	6
1.2 Authority	6
1.3 Community Profile.....	7
1.3.1 Physical Setting.....	7
1.3.2 Community of Twentynine Palms	7
1.3.3 Demographics	8
1.3.4 Existing Land Use.....	8
1.3.5 Development Trends.....	8
Section 2 Plan Adoption	9
2.1 Adoption by Local Governing Body.....	9
2.2 Promulgation Authority	10
2.3 Primary Point of Contact	11
Section 3 Planning Process	12
3.1 Preparing for the Plan	12-13
3.2 Planning Team	14-15
3.3 Coordination with Other Jurisdictions, Agencies, and Organizations.....	16
3.4 Public Involvement/Outreach	16-17
3.5 Assess the Hazard	17
3.6 Set Mitigation Goals	17-18
3.7 Review and Propose Mitigation Measures	18
3.8 Draft Local Hazard Mitigation Plan	18
3.9 Adoption of the Plan	18
Section 4 Risk Assessment	19
4.1 Hazard Identification	19
4.1.1 Hazard Screening Criteria.....	19-20
4.1.2 Hazard Assessment Matrix	20
4.1.3 Hazard Prioritization.....	20-22
4.2 Hazard Profile	22
4.2.1 Earthquake Hazard.....	22-23
4.2.2 Climate Change/Drought.....	33-34
4.2.3 Terrorist Event.....	34
4.2.4 Power Failure.....	34
4.2.5 Flash Flooding/Flooding Hazard.....	35
4.2.6 Freezing Event.....	41-42
4.2.7 Long Term Drought.....	42

4.2.8 Fire/Wildfire.....	42-43
4.3 Inventory Assets.....	46
4.3.1 Facilities Overview	46
4.3.2 Critical Facility List	46-47
4.4 Vulnerability Assessment	47
4.4.1 Methodology	47
4.4.2 Earthquake Vulnerability Analysis	47-48
4.4.3 Flash Flooding Vulnerability Analysis	48
4.4.4 Long-Term Drought Vulnerability Analysis	48-49
4.4.5 Climate Change Vulnerability Analysis	49
4.4.6 Wildfires Vulnerability Analysis	49
4.4.7 Dam Inundation Vulnerability Analysis	49
4.4.8 Power Failure Vulnerability Analysis.....	50
4.4.9 Freezing Event Vulnerability Analysis.....	50
4.4.10 Terrorist Event Vulnerability Analysis.....	50
4.4.11 Potential Loss Estimate.....	50-53
Section 5 Community Capability Assessment.....	53
5.1 Agencies and People	53
5.2 Existing Plans.....	53-54
5.3 Regulations, Codes, Policies, and Ordinances.....	54
5.4 Mitigation Programs	54-55
5.5 Fiscal Resources.....	55
Section 6 Mitigation Strategies.....	55
6.1 Overview	55
6.2. Mitigation Goals Objectives and Projects.....	55-56
6.2.1 Earthquakes.....	56
6.2.2 Climate Change/Long-Term Drought.....	57
6.2.3 Terrorist Event	57-58
6.2.4 Power Failure	58
6.2.5 Flash Flooding	58
6.2.6 Freezing Event	59
6.2.7 Mitigation Priorities.....	59-68
6.3 Implementation Strategy.....	68-69
Section 7 Plan Maintenance.....	69
7.1 Monitoring, Evaluating and Updating the Plan	69
7.2 Implementation through Existing Programs	69
7.3 Continued Public Involvement	69

Tables

Table 1 & 2 Plans Reviewed/Financial Resources	13
Table 3 Screening Assessment Matrix.....	20
Table 4 Historic Southern Calif. Earthquakes	26-27
Table 5 Flash Flooding/Flooding History.....	37-39
Table 6 Critical Facilities.....	46

Figures

Figure 1A & 1 B Earthquake Faults with District Boundaries	24-25
Figure 2 USGS Shake Map and Scenario	28
Figure 3 100/500-year Flood Map	36
Figure 4 Fire Map.....	44
Figure 5 Population Medium Income.....	45

Attachments

Appendix A - Internal/External Meeting Agenda's, Minutes and Sign-In Sheets
Appendix B - Board of Directors Meeting Minutes, LHMP Public Comment Period
Appendix C - Screen Shot of District Website LHMP page
Appendix D - Water Conservation Ordinance
Appendix E - Special District Incorporation Documentation

SECTION 1: INTRODUCTION

1.1 Purpose of the Plan

Emergencies and disasters can leave people injured or displaced; result in fatalities; cause significant damage to our communities, businesses, public infrastructure and our environment; and cost tremendous amounts in terms of response and recovery dollars and economic loss. Hazard mitigation reduces the risk of personal damages, loss of life, and property damages caused by emergencies and disasters.

Repairs and reconstruction after disasters are often completed to simply restore infrastructure to pre-disaster conditions. Such efforts expedite a return to normalcy; however, merely replicating pre-disaster conditions results in a cycle of damage, reconstruction, and repeated damage. Hazard mitigation attempts to break this cycle by reducing hazard vulnerability.

While we cannot prevent disasters from happening, their effects can be reduced or minimized through preparedness and mitigation. For those hazards that cannot be fully mitigated, the community must be prepared to provide efficient and effective response and recovery to emergencies. This can be accomplished through a well-organized public education and awareness effort.

The purpose of this Local Hazard Mitigation Plan (LHMP) is to identify potential hazards to Twentynine Palms Water District, (TPWD) and formulate mitigation measures for future protection of the District's critical infrastructure and the community's safety with respect to the District's facilities and services. Approval of this LHMP by State of California Office of Emergency Services (OES) will also allow the District to become eligible to receive federal funding assistance under the Local Hazard Mitigation Grant Program or the Pre-Disaster Mitigation program.

1.2 Authority

The Twentynine Palms Water District is a consolidated independent Special District, formed in, and operating pursuant to, the provisions of the Twentynine Palms Water District Law. The legal authority for Twentynine Palms Water District is set forth in Division 12 of the Water Code, in the State of California, section 30000 et. seq. The District is governed by a five (5) member Board of Directors, elected at-large from within the District's service area. The General Manager administers the day-to-day operations of the District in accordance with policies and procedures established by the Board of Directors. The Board of Directors employs a General Manager. The General Manager employs a Finance Manager, District Secretary, Operations Manager, Office Manager and Operations Superintendent. There are 14 full-time non-management employees at the District. These 14 employees are union employees and are hired by the General Manager.

As required by the Department of Homeland Security's Federal Emergency Management Administration (FEMA), LHMPs must be updated, adopted, and approved every five (5) years. This is the District's first LHMP.

1.3 Community Profile

The Twentynine Palms Water District serves Twentynine Palms, California, with water. The water services cover the City of Twentynine Palms as-well-as outlying areas in the County of San Bernardino. The District pumps water from the underground aquifer and distributes the water to the customer. The only available water supply is local ground water. The District serves a population of approximately 18,000 residents within an 87-square mile area and maintain approximately 8,000 meter services, 200 miles of pipeline, and 17-million gallons of water storage capacity. When physical operations began in 1955, the District served a population of 4,675 residents within an area of 26.7 square miles. The 1,422 meter services were fed by approximately 94 miles of leaky, undersized, and substandard pipeline. The community's water storage capacity amounted to less than 200,000 gallons.

1.3.1 Physical Setting

Twentynine Palms is a unique Hi-Desert community on the southern boundary of the Mojave Desert in San Bernardino County, just north of the Little San Bernardino and Pinto Mountains. Located 54 miles northeast of Palm Springs at an elevation of 2,000 feet, the area is known for its pure water, crystal clear air and deep blue skies. It is nestled between the largest Marine Corps base in the world, the Marine Corps Air Ground Combat Center to the north, and the Joshua Tree National Park to the south. The Oasis of Mara, a large group of springs aligned along the Pinto Mountain fault and bordering Joshua Tree National Park, is a significant archaeological site and was an original source of water to this area for over 4,000 years.

1.3.2 Community of Twentynine Palms

Twentynine Palms, California, is a unique Hi-Desert community on the southern boundary of the Mojave Desert in San Bernardino County, California just north of the Little San Bernardino and Pinto Mountains. Located 54-miles northeast of Palm Springs at an elevation of 2,000 feet, the area is known for its pure water, crystal clear air, and deep blue skies. The District is nestled between the Marine Corps Air Ground Combat Center, the largest Marine Corps base in the world, to the north, and the Joshua Tree National Park to the south. The National Park attracts more than 1.75 million visitors per year from all over the world. The Oasis of Mara, a large group of springs aligned along the Pinto Mountain fault and bordering Joshua Tree National Park, is a significant archaeological site. This was an original source of water to this area for more than 4,000 years.

County of San Bernardino

The County of San Bernardino has a population of more than 2,000,000 people as of the 2010 census, which is up from the reported 1,709,434 in the 2000 census. With an area of 20,105 square miles, San Bernardino County is the largest county in the United States by area. It is larger than nine States, including New Jersey, Massachusetts, and Maryland.

Located in the southeast section of California, thinly populated deserts and mountains cover most of this vast county. The bulk of the County's population resides in two Census County Divisions, where approximately 1,400,000 people live as of the 2010 Census. San Bernardino County is bordered by the Colorado River on the east, Riverside County on the south, Los Angeles, Orange and Kern Counties on the west and Inyo County on the north.

1.3.3 Demographics

The District serves approximately 18,000 residents through 8,000 service connections.

The area of Twentynine Palms is considered a disadvantaged community, by the State of California. Per the 2010 United States Census, Twentynine Palms had a median household income (MHI) of \$42,572 with 17.0% of the population living below the federal poverty line. The MHI is approximately 70% of the State MHI of \$61,094.

1.3.4 Existing Land Use

The existing land use is housing, commercial and light industry. The City of Twentynine Palms, is responsible for land use, TPWD does not have authority to regulate land use in the area. Incorporated areas are regulated by the City of Twentynine Palms and the County of San Bernardino.

1.3.5 Development Trends

Development of the Twentynine Palms area was reduced significantly during the housing industry crash of 2008. Twentynine Palms is seeing only individual custom or speculation homes being built in the area. There are no housing tracks being developed in the District's spear of influence. Home prices in the area are increasing at a much lower rate, than other communities in the high desert and a much lower increase than the State of California.

SECTION 2: PLAN ADOPTION

2.1 Adoption by Local Governing Body

The completed Local Hazard Mitigation Plan (LHMP) will be presented to the District's Governing Body for adoption. The plan will then be forwarded to CalOES and then to FEMA for approval. If any sections of the plan are changed during the process, the document will be sent back to the District's Board of Directors for final adoption.

Upon adoption, the District's Board of Directors meeting minutes will be included within the LHMP.

2.2 Promulgation Authority

This Local Hazard Mitigation Plan was reviewed and approved by the elected members of the Twentynine Palms Water District Board of Directors:

Mr. Kerron E Moore

Board President

Description of Involvement: President, Twentynine Palms Water District Board of Directors

Ms. Carol Giannini

Vice-President

Description of Involvement: Vice-President, Twentynine Palms Water District Board of Directors

Mr. Roger Shinaver

Director

Description of Involvement: Director, Twentynine Palms Water District Board of Directors

Ms. Suzi Horn

Director

Description of Involvement: Director, Twentynine Palms Water District Board of Directors.

Mr. Robert Coghil Jr.

Director

Description of Involvement: Director, Twentynine Palms Water District Board of Directors

Mr. Ray Kolisz

General Manager

Description of Involvement: General Manager, Twentynine Palms Water District

Mr. Ray Kolisz

Board Secretary

Description of Involvement: Board Secretary, Twentynine Palms Water District

2.3 Primary Point of Contact

The Point of Contact for information regarding this plan is:

BEFORE FEMA APPROVAL IS:

Gary Sturdivan
Sierra West Consultants, Inc.
gsturdivan@me.com
909-658-5974

AFTER FEMA APPROVAL IS:

Mr. Ray Kolisz
General Manager
Twentynine Palms Water District
72401 Hatch Rd.
Twentynine Palms, CA 92277
760-367-7546 (Office)

SECTION 3: PLANNING PROCESS

This section documents the planning process used to review and compile information that leads to an effective LHMP. A comprehensive description of the planning process informs citizens and other readers how the plan was developed, and provides a permanent record of how decisions were reached. These decisions can be understood, reconsidered, replicated, or modified in future updates. An integral part of the planning process is documentation of how the public was engaged throughout the process.

This LHMP was completed with the coordination and involvement of the Twentynine Palms Water District staff and representatives from the local community. These team members have a vested interest in the performance and resiliency of the TPWD. Team members from the local community include: business owners from Twentynine Palms. This team developed and implemented the planning process.

San Bernardino County Office of Emergency Services reviewed the plan and the contents of this plan for items that should be included from the County HMP. County Fire OES supplied all hazard maps that are included in this document.

This section includes a list of the Planning Team Members, a summary of the meetings held, coordination efforts with the surrounding communities/groups, and public outreach efforts.

3.1 Preparing for the Plan

The Planning Team reviewed FEMA's "Hazard Mitigation Plan Crosswalk", and San Bernardino County OES supplied information on past events that affected the service area.

The San Bernardino County OES completed a FEMA Hazard Profile of the area. Each of the maps were submitted to the District for use in this LHMP. The Hazard Profile maps were used in the planning meetings to show past flood areas, earthquakes, flash floods and other disasters that have affected the area. Other written documentation of past events was also reviewed. The team discussed the different events that have happened in the community; such as flash flooding, earthquakes, windstorms, power outages and freezing events. Members of the planning team have been longtime residents of the community and have lived through many of these emergency events.

The planning process consisted of:

- Documenting past events
- Incorporating data
- Engaging the Planning Team
- Posting the meeting agendas, meeting minutes and draft LHMP onto the District's website and asking for public input and comments on the planning process
- Sharing information at the monthly District Board of Directors Meetings
- Conducting Public Outreach

During the planning process the Planning Team utilized the following plans to gain information on the hazards that face the area and the mitigation goals of the County of San Bernardino. The following plans were utilized.

- East Valley Water District LMHP
- Twentynine Palms LHMP
- San Bernardino County HMP
- USGS Golden Guardian Shake Out 2008
- Twentynine Palms Water District's, Water Master Plan
- California HMP 2013

Table 1 & 2: Plans Reviewed by Team

<u>Study Plan</u>	<u>Key Information</u>
Bighorn Desert View LMHP	Layout of an LHMP for water agencies
Hi-Desert Water District, Draft LHMP	Hazard Identification, Mitigation measures
San Bernardino County HMP	Mitigation measures and goals, Hazards,
USGS Golden Guardian 2008	Earthquakes, affects, planning
Twentynine Palms Water District Water Master Plan	Land use for area, future projects
2013 California HMP	Goals for the State of California
San Bernardino County Flood Control	Gain information on future flood control projects
FEMA Flood Insurance Study for S.B. County	Flood history

Financial Resources for future Mitigation projects

	Local	Revenues	Amount
The District's Budgets and Financial Planning Documents		Water Sales, new construction	Varies from year to year
FEMA Grants		None	None
State Revolving Funds Draft application		None	None
Prop 84 Funding		None	None
FEMA Mitigation Grants		District has not applied for FEMA funding in the past	As funding and approval are obtained
Future Budget Funds Considerations		Water Sales	Varies as funding is available each year

3.2 Planning Team

The Planning Team compiled information and reviewed this LHMP under the authorization of the District. The Planning Team members include:

Mrs. Cindy Fowlkes

Twentynine Palms Water District, District Secretary

Description of Involvement: Internal Planning Team Member and Editor

Mrs. Fowlkes began working for the Twentynine Palms Water District in 2012 when she was hired as the District Secretary. Mrs. Fowlkes has a background in human resources and worked for a homeowner's association prior to employment at the District. Her duties at the District include compilation of the Board packets, meeting minutes, Board travel arrangements, government agency compliance, human resource duties, website administrator, assistant to the General Manager and assists District staff as necessary.

Mr. Gary Sturdivan

LHMP Consultant

Description of Involvement: Planning Team Lead

Mr. Sturdivan, as a consultant to the District, is the team leader for the LHMP. Mr. Sturdivan develops the agendas for each LHMP meeting, leads the discussions, compiles the meeting minutes and other information for public comment, and prepares draft text for the LHMP. Mr. Sturdivan provides informational updates to the District's Board of Directors and incorporates the Board's comments into the planning process and LHMP. Mr. Sturdivan has a vast knowledge of Mitigation Planning, Grant Funding, and Emergency Management. Mr. Sturdivan worked in the water industry for 25 years, with 8 years as the Director of Safety/Regulatory Affairs/Emergency Management and Grants for East Valley Water District prior to becoming a consultant in 2011.

Mr. Mike Minatrea

Operations Superintendent

Description of Involvement: Internal Planning Team Member:

Mr. Minatrea has been employed by the Twentynine Palms Water District for 25 years, He started on the construction crew and was promoted to Operations Superintendent in 2014.

Mr. Minatrea holds a California Treatment Operator Grade III and a California Distribution Operator Grade V and a California Cross-Connection Specialist Certification. Mr. Minatrea also holds a San Bernardino County Backflow Prevention Device Tester Certification and a California Class A driver's license.

Mrs. Rochelle Bowe
Office Manager

Description of Involvement: Internal Planning Team Member

Mrs. Bowe began working for the Twentynine Palms Water District in 1988. During her employment, she's worked in customer service, accounting and currently serves as the Office Manager. Mrs. Bowe oversees a staff of 2 customer service representatives and a bookkeeper. Her duties include accounts payable, payroll, employee benefits and worker's compensation.

Mr. Matthew Shragge
Operation and Maintenance Lead Worker

Description of Involvement: Internal Planning Team Member

Mr. Shragge has been employed with Twentynine Palms Water District for 10 years and currently serves as Operation and Maintenance Lead Worker. Mr. Shragge has a background in construction with emphasis in underground utilities and grading. Some of Mr. Shragge's responsibilities include Chairman of the District's Safety Committee, Cross Connection Control Program, and Water Conservation/Complaint issues. His duties at the District include daily scheduling for Operation and Maintenance staff, customer service, leak audit services, and "water waste" complaints. He currently holds a State of California Water Distribution Certificate, Grade IIII and a California Water Treatment Certificate Grade II and an American Water Works Association as a Cross Connection Control Specialist.

Mr. Timothy Cole

Description of Involvement: External Planning Team Member

Mr. Cole worked with Hi Desert Medical Center for 5 years then joined the Twentynine Palms Fire Department. During the 22 years with Twentynine Palms Fire Department Mr. Cole became an Engineer. Timothy now works with San Bernardino County Fire Department as an Engineer at station # 44 in Twentynine Palms. Engineer Cole holds a class B license and enjoys serving his Community helping others.

Mr. Jeffery Johnson

Description of Involvement: External Planning Team Member

Mr. Johnson has been a plumbing contractor since 1984. In 1977, he began servicing pumps and wells and managed his own private water company until 2010. Mr. Johnson is a resident and homeowner in Twentynine Palms, Mr. Johnson has an interest in water quality and the future availability of water in the region.

3.3 Coordination with Other Agencies and Organizations

TPWD staff invited residents of the community to participate in the LHMP planning process. The Internal and External Planning Teams include two water system customers, four persons from Twentynine Palms Water District. The County of San Bernardino OES was invited to be on the Planning Team, but they were unable to attend. However, the County OES provided the hazard maps attached to this document and gave guidance in the planning of this document. In addition, San Bernardino County OES, LHMP Officer Miles Wagner has reviewed and commented on the draft LHMP and his comments have been incorporated into the final LHMP.

The Planning Team participated in monthly meetings to coordinate efforts, provide input, and receive support for the LHMP. The support included receiving technical expertise, resource materials and tools. The TPWD facilitated the LHMP process and provided sufficient information to follow FEMA requirements for the program. The tools, resource materials, and other project related information are maintained on a project portal on the District's website www.29palmswater.org which, allowed access to the information by all participants and the public.

The 2016/2017 Board meeting agendas, meeting minutes, and sections of the LHMP were posted on the TPWD Website as the LHMP was written. Requests were made on the Website for public comments and informing the public that comments could be made by e-mailing Mr. Sturdivan at gsturdivan@me.com or by calling Mr. Sturdivan at 909-658-5974. No public comments were received by Mr. Sturdivan or by the District staff.

3.4 Public Involvement/Outreach

A critical component of the LHMP process is to assess the likely hazards that may impact the District's facilities or operations. It is important to have a competent understanding of these hazards without over-analyzing remote or highly unlikely hazards.

This LHMP has been developed through an extensive review of available information on hazards the TPWD has faced in the past and most likely will face in the future. The Planning Team reviewed and discussed items that have happened in the State of California as well as disasters that have happened in the TPWD service area and in other desert areas of the California and Arizona. The Team reviewed documents such as engineering drawings, photographs, and available geotechnical and geologic data both from the Internet and outside sources (for example, FEMA Hazard Mapping, San Bernardino County hazard maps and documents from the District on past events).

The Planning Team completed the assessment of the various hazards in a group setting. The Team members have many years of personal experience working in the local area and many working in a water utility. Team members know the history of past hazardous or emergency events, such as the 1992 Landers Earthquake - a 7.3 magnitude earthquake that severely impacted the region. This

earthquake's epicenter was only 10 miles northwest of Twentynine Palms in Landers, CA. Team members have also experienced other events affecting the community.

See **Attachment A** for the details of the public involvement process such as the meetings dates, purpose, agendas, sign-in sheets, minutes and public comments.

3.5 Assess the Hazard

A critical component of the LHMP process is to assess the likely hazards that may impact the District's facilities and or operations. It is important to have a thorough understanding of these hazards without over-analyzing remote or highly unlikely hazards.

This LHMP has been developed through an extensive review of available information on hazards the District has faced in the past and most likely will face in the future. The Planning Team reviewed and discussed items that have happened in the State of California as well as disasters that have happened in other desert areas of the United States. The Planning Team reviewed documents such as engineering drawings, photographs, and available geotechnical and geologic data both from the Internet and outside sources (for example, FEMA Hazard Mapping, San Bernardino County hazard maps, and documents from the District on past events).

The Planning Team completed the assessment of the various hazards in a group setting. The Team members have many years of personal experience working in the local area and many working with a water utility. Team members know the history of past hazardous or emergency events, such as the 1992 Landers Earthquake - a 7.3 magnitude earthquake that severely impacted the region. This earthquake's epicenter was only 10 miles northwest of Twentynine Palms in Landers and Flamingo Heights, California. This earthquake didn't impact the TPWD but, is still remembered by many residents.

3.6 Set Mitigation Goals

After the hazards were identified, the potential damages that could result were estimated. Mitigation goals are set based on the likelihood and the potential damages from a hazard.

The process of identifying mitigation goals began with a review and validation of damages caused by specific hazards at similar agencies in the surrounding area. Damages to other agencies outside the area were also considered. In addition, the Planning Team developed estimated damages using engineering budget estimates for anticipated response and replacement costs. The Planning Team completed an assessment of the likelihood and damages for each identified hazard and discussed whether each of the mitigation goals was valid. This discussion led to the opportunity to identify new goals and objectives for mitigation in the LHMP. From this, the Planning Team determined the best mitigation goals to reduce or avoid long-term vulnerabilities.

The Planning Team set the goals for the 2017 LHMP. The team members understand the issues facing the TPWD with respect to the District's Mission Statement: "The mission of the Twentynine Palms Water District is to provide a safe and adequate supply of water at the lowest feasible cost

to the people of the district and to preserve and protect the water resources within the established boundaries of the district."

At a planning meeting, the group "brainstormed" to determine appropriate mitigation goals to reduce or eliminate long-term vulnerabilities and to identify the related hazards. First, the team reviewed the past hazards that have faced the area and other water agencies in the area, and discussed changes in the community that may have mitigated these events. Then the team decided whether those hazards were still viable today. Some hazards were removed and other hazards were added to the list.

3.7 Review and Propose Mitigation Measures

Meetings were held with the Planning Team to review the identified hazards and solicit input on appropriate mitigation measures for each hazard to be identified in the LHMP. The Team identified mitigation measures for each critical piece of infrastructure. Each meeting focused on specific hazards of the District's facilities, operations, risk assessment, and mitigation strategy.

3.8 Draft Local Hazard Mitigation Plan

The District's consultant led the Planning Team and prepared the draft LHMP with the input from the Planning Team, Board of Directors, and the public. The Planning Team members reviewed and commented on the draft LHMP and subsequent changes were made before the LHMP was finalized and adopted by the Board of Directors. All meeting agenda's, meeting minutes, draft documents were posted on the District Web-site. Notices were sent to all water consumers in the service area, stating that all LHMP documents were posted on the Web-site and asked for comments. Each Board meeting was opened with a public comment period. All comments or concerns were addressed by Gary Sturdivan. Mr. Sturdivan's email address was also, posted on the District's Web-site.

The LHMP was reviewed in comparison to the FEMA-designed Crosswalk. The Crosswalk links the Federal Requirements and identifies the sections in the LHMP where the information can be found. This provides a rating as to the level of compliance with the federal regulations.

3.9 Adoption of the Plan

The draft LHMP was posted on the District's Web site for 30 days, asking for comments from the public. The public could comment by e-mail, telephone, or in person at a District Board of Directors meeting. There were no public comments.

The LHMP was submitted to the District's Board of Directors for adoption after incorporating any final comments. The 2017 LHMP was adopted at the District's regularly scheduled Board of Directors meeting on XX-XX-XXXX. The LHMP was then sent to the State of California Office of Emergency Services, before being sent to FEMA for final approval.

SECTION 4: RISK ASSESSMENT

The goal of mitigation is to reduce the future impacts of a hazard, including property damage, disruption to local and regional economies, and the amount of public and private funds spent for recovery. Mitigation decisions are based on risk assessments where the probability of an event is evaluated with respect to the anticipated damages caused by such an event.

The purpose of this section is to understand the hazards and their risks in the District's service area. There are generally four steps in this process: 1) hazard identification; 2) vulnerability analysis 3) risk analysis and 4) perform a vulnerability assessment, including an estimation of potential losses. Technically, these are four different items, but the terms are sometimes used interchangeably.

4.1 Hazard Identification

The Planning Team discussed potential hazards and evaluated their probability of occurrence. The following subsections describe this process and the results.

4.1.1 Hazard Screening Criteria

The intent of screening the hazards is to help prioritize which hazards create the greatest concern to the District. A list of the natural hazards to consider was obtained from Federal Emergency Management District's (FEMA) State and Local Mitigation Planning How-to Guide: Understanding Your Risks (FEMA 386-1). The Planning Team used the Stafford Act and the California Emergency Service Act and guidance from the American Water Works Association, Standards, G-440 and J-100 RAMCAP. Each risk was ranked with a 1 - 4. (1) being the "Highly Likely" event, (2) being "Likely" (3) being the "Somewhat Likely" event and (4) being "Least Likely" event. The Planning Team reviewed each hazard on the list, using their experience and historical data pertaining to each hazard, and developed the following list with the ranking:

Hazards:

- Earthquake = 1
- Power Failure = 2
- Flash Flooding = 2
- Freezing Events = 4
- Climate Change/Drought = 1
- Terrorist Event = 1
- Wildfires/Fire = 4

The following natural hazards were considered not to affect or be a risk to the District and were given a ranking well below a 4:

- Volcanoes
- Tsunami
- Windstorms

- Road Closures - ingress/egress to the area. Coordination with the City and County. Roads are not in the TPWD sphere of influence.

4.1.2 Hazard Assessment Matrix

The TPWD used a qualitative ranking system for the hazard screening process consisting of generating a high/medium/low style rating for the probability and impact of each screened hazard.

- For **Probability**, the ratings are: Highly Likely, Likely or Somewhat Likely
- For **Impact**, the ratings are: Catastrophic, Critical, or Limited

The screening assessment matrix is used for the District’s hazards. The hazards have been placed in the appropriate/corresponding box/cell of the corresponding “Hazard Matrix” based on the Planning Team’s collective experience. A subset of this group of hazards is used for the prioritization of the hazards in the following section.

Table 3: Screening Assessment Matrix

	<i>Impact</i>			
	Catastrophic	Critical	Limited	
<i>Probability</i>	Highly Likely 1	Terrorist Event Earthquake Long Term Drought	Climate Change	
	Likely 2	Flash Flooding	Power Failure	Flooding
	Somewhat Likely 3			
	Least Likely 4			Freezing Wildfire

NOTE: There were no threes identified and items identified as a four are not a treat to the District.

4.1.3 Hazard Prioritization

Using the hazard screening criteria and assessment matrix, the Planning Team identified the following hazards to be the most likely to affect the District:

1. **Earthquake:** There are many faults running through the District’s service area. The 1992 Landers earthquake caused significant damage to the distribution system of Bighorn Desert View Water Agency’s, and Hi Desert Water District, wells, and reservoirs. FEMA funding replaced portions of the pipelines after the 1992 Landers Earthquake at those locations. However, Twentynine Palms Water District, didn’t see the same system failure rate, as other agencies in the area. The local faults could potentially damage 100% of the District’s critical facilities. A major earthquake has not happened in the service area, however, it will occur, someday, as there are many earthquake fault lines running around, through, and near the service area.

2. **Terrorist Event**: The largest Marine Base in the world is located within 4 miles of the TPWD Northern boundary. A major terrorist event at the Marine Base could have a negative effect on the water supply or damage to the infrastructure of the District, leaving the District with no power and no water in the system due to ruptured pipelines, contamination, or other damages. Since the terrorist attack in San Bernardino, most governmental agencies have had to rethink their precautions of buildings and infrastructure, public, and staff. There are two off base housing structures in the District's service area that the District supplies water too.

3. **Climate Change/Long-term Drought**: Climate change is altering California's water supply throughout the state. Northern California is experiencing warmer winters, less snow pack, and longer periods between wet seasons. This affects water supply throughout the Central Valley and urban Southern California. TPWD does not utilize imported water from Northern California to recharge the underground aquifer and imported water is not available to the District. The State has been in a prolonged drought, however the winter of 2016/2017 delivered more snow pack and rain, which has moved most of the State from the Drought of the last seven-years. The District, however, relies on groundwater and the impacts from climate change are long-term. Higher temperatures may increase water use and groundwater extraction, which will lower the groundwater table. Increased storm events will increase flash flood risks and will decrease groundwater recharge because the water will runoff instead of infiltrating to re-charge the underground aquifer and groundwater. Over time, the District could experience increased pumping costs and water supply wells may become too shallow and must be replaced with deeper wells. Climate change could also, mean that the ground water become higher in the aquifer, which would mean the TPWD has an overabundance of water.

4. **Flash Flooding**: Flash flooding is very common in the San Bernardino County Deserts, and happens almost yearly. The last flooding events in Twentynine Palms was in 2015 and prior to that in 2011. These events uncovered pipelines installed within dirt roads throughout the distribution system.

5. **Power Failure**: Power failure of a few minutes to a few hours are common and not considered a substantial hazard. A prolonged power failure, however, will affect delivery of water from the wells to the distribution system. The District pumps groundwater directly into the distribution system and the water is stored in a series of reservoirs at various elevations to maintain relatively even pressures throughout the system. The District has only minor water treatment systems at most of the wells, however, TPWD operates a 3.0 million gallon-a-day Fluoride Removal Treatment Plant. The fluoride removal plant produces the majority of the drinking water in the service area. Most of the groundwater in the area meets or exceeds the Federal and State of California regulations for potable drinking water. Without power, stored water in the reservoirs would be exhausted within three to five days in the winter months, and two days in the summer months. As such, a prolonged power outage could shut down all water supplies. There have been no significant power failures in the recent past, but power failure is a high concern for the District, given its remote location and being many miles from a power generating plant. TPWD owns and maintains several diesel fired generators to counter act the loss of power.

6. **Wildfires/Fire**: Wildfires are not a significant concern in the desert, while local facility fires are a significant concern. The District's office facilities, computer systems, SCADA system, and operating pump stations are susceptible to fire damage. The consequences include loss of life,

buildings, equipment, and property damage. There have been no wildfires or brush fire in this area, the landscape is pretty barren, therefore not much to burn. There have been no documented wildfires in the service area.

7. **Freezing Events:** The temperature range in the Morongo Basin is quite extreme. Temperatures range from a low of 40 degrees in the winter to 115 degrees in the summer months. The five highest profile hazards for the District are: 1) Earthquake 2) Climate/Drought 3) Terrorist Event 4) Flash Flooding/Flooding 5) Power Failure. While other hazards are profiled in the following sections for completeness, the District's priority and focus for the mitigation projects will be for the five high profile hazards.

4.2 Hazard Profile

4.2.1 Earthquake Hazard

Probability: **Highly Likely**

Impact: **Catastrophic**

General Definition: An earthquake is a sudden, rapid shaking of the Earth caused by the breaking and shifting of rock beneath the Earth's surface. For hundreds of millions of years, the forces of plate tectonics have shaped the Earth as the huge plates that form the Earth's surface move slowly over, under, and past each other. Sometimes the movement is gradual. Increased movement occurs when the plates become locked together, unable to release the accumulating energy. When the accumulated energy grows strong enough, the plates break free causing the ground to shake. Most earthquakes occur at the boundaries where the plates meet. However, some earthquakes occur in the middle of plates.

Ground shaking from earthquakes can collapse buildings and bridges; disrupt gas, electric, water utilities, and phone service; and trigger landslides, avalanches, fires, and destructive ocean waves, including tsunamis. Buildings with foundations resting on unconsolidated landfill and other unstable soil, as well as homes not tied to their foundations are at risk because they can be shaken off their mountings even during a mild earthquake. When an earthquake occurs in a populated area, it may cause deaths, injuries and extensive property damage.

Earthquakes strike suddenly, without warning. Earthquakes can occur at any time of the year and at any time of the day or night. On a yearly basis, 70 to 75 damaging earthquakes occur throughout the world. Estimates of losses from a future earthquake in the United States approach \$200 billion.

There are 45 states and territories in the United States at moderate to very high risk from earthquakes, and they are in every region of the country. California experiences the most frequent damaging earthquakes; however, Alaska experiences the greatest number of large earthquakes - most located in uninhabited areas. The nearby Southern Section of the San Andreas Fault is ranked in the top 5 most likely faults to cause major damage in the U.S. by USGS (www.USGS.org). See fault map on page 24.

Description: There are several earthquake faults located within the District's service area. While there have been many earthquakes in and around the District's service area, the 1992 Landers/Big Bear earthquakes damaged above ground reservoirs, miles of pipelines in the distribution system, and groundwater wells. In other locations, there was no significant damage in the TPWD service area.

A source for the earthquake profile was a report that describes a new earthquake rupture forecast for California developed by the 2007 Working Group on California Earthquake Probabilities (WGCEP 2007). The Earthquake Working Group was organized in September 2005, by the U.S. Geological Survey (USGS), the California Geological Survey (CGS), and the Southern California Earthquake Center (SCEC) to better understand the locations of faults in California. The group produced a revised, time independent forecast for California for the National Seismic Hazard Map.

Mitigation:

Projects to help mitigate damage from earthquakes range from installing seismic shut-off valves on all water reservoirs in the District to flexible pipe joints that can be installed at reservoirs, wells and booster pumps. Flexible pipe joints can also be installed in sections of water pipelines to allow the pipelines more flexibility during earth movement. Block walls can be installed around facilities to help insure the security of critical facilities and control water that may escape from reservoirs. The District has flex couplings on all of the reservoirs, but does not have seismic shut-off valves on any reservoir.

Figure 1A: ShakeOut, Shake Map

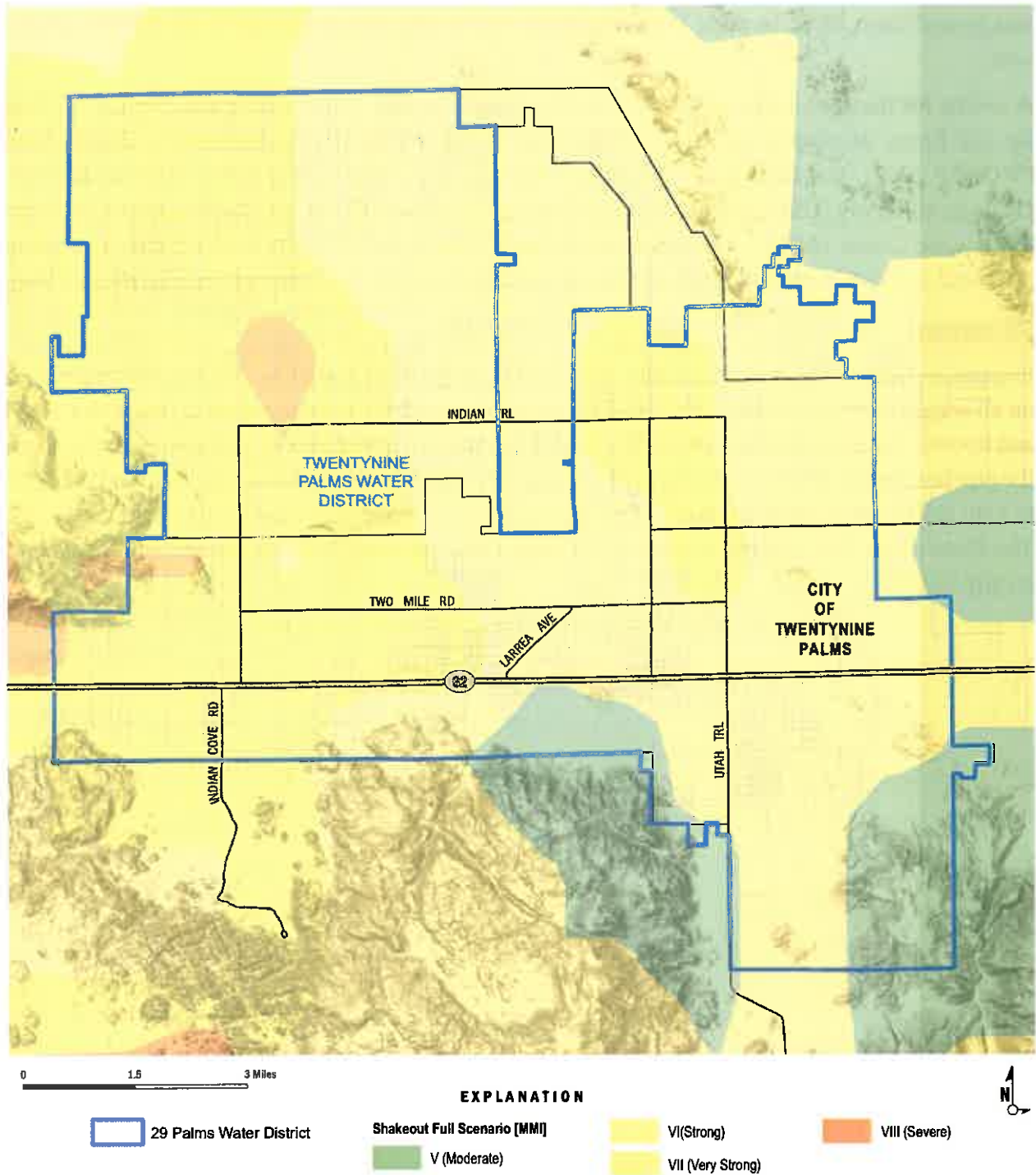


Figure 1B: Earthquake Fault Map/ with District Boundaries

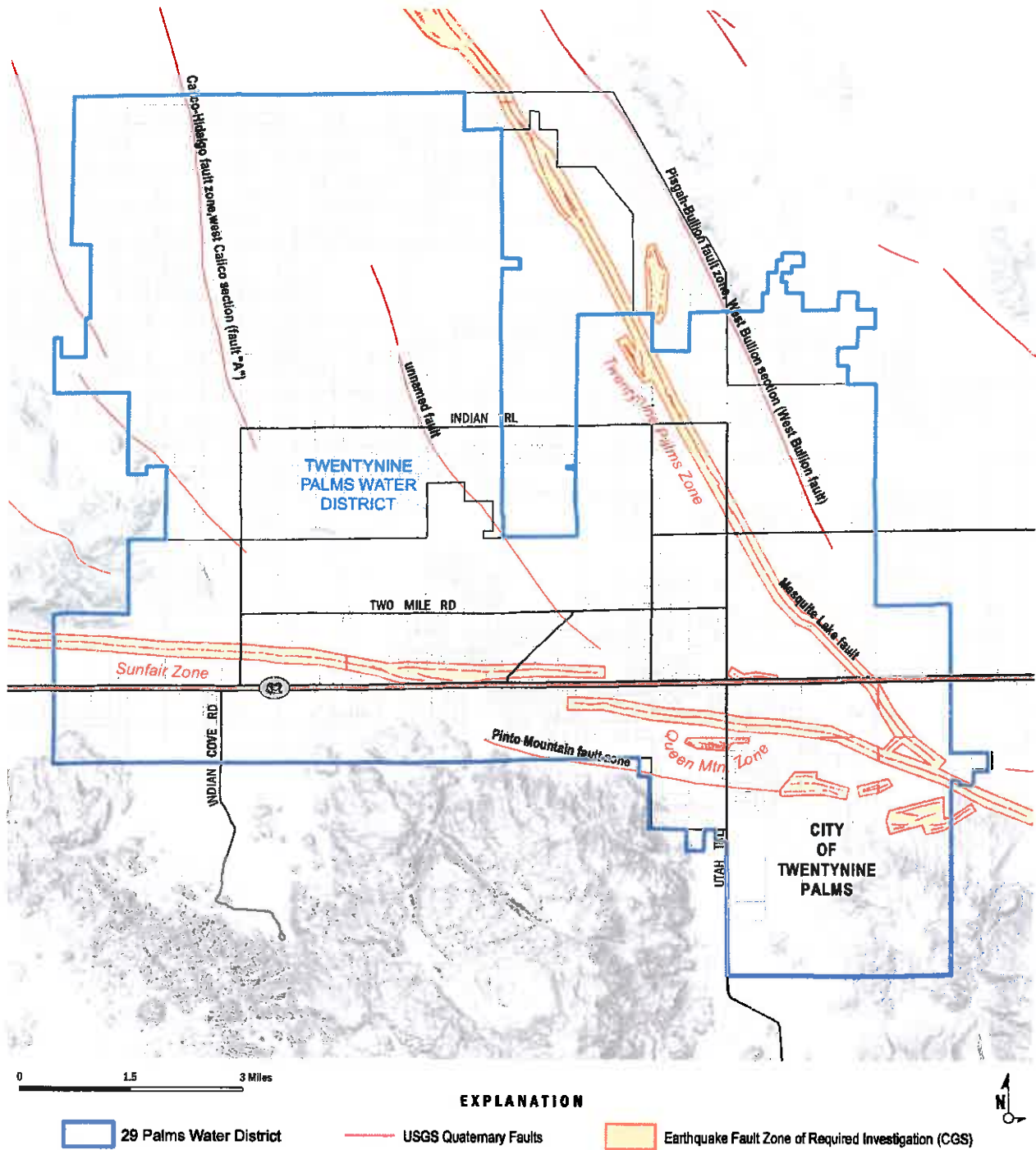
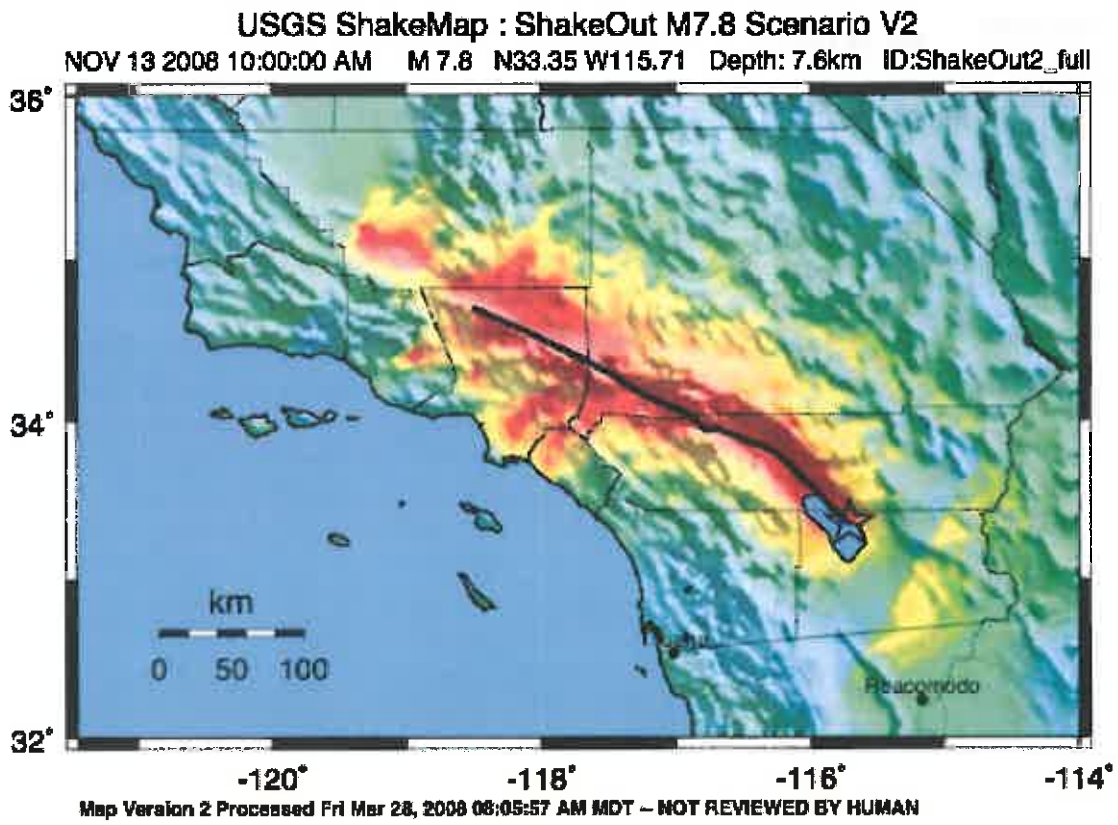


Table 4: Historic Southern California Earthquakes:

<i>Earthquake Name</i>	<i>Date of Earthquake</i>	<i>Magnitude of Quake</i>	<i>Damage Description</i>
<i>Wrightwood Earthquake</i>	<i>Dec. 8, 1812</i>	<i>7.5</i>	<i>40 deaths.</i>
<i>Cajon Pass</i>	<i>July 22, 1899</i>	<i>5.7</i>	<i>Landslides, heavy damage to buildings in San Bernardino. No deaths.</i>
<i>San Jacinto</i>	<i>Dec. 25 1899</i>	<i>6.5</i>	<i>San Jacinto & Hemet had severe damage. Six deaths. Chimneys thrown down and walls cracked in Riverside.</i>
<i>Elsinore</i>	<i>May 15, 1910</i>	<i>6</i>	<i>Chimney's toppled.</i>
<i>San Jacinto</i>	<i>April 21, 1918</i>	<i>6.8</i>	<i>Most damage in San Jacinto and Hemet. Several injuries, one death. Landslides, cracks in ground, roads, and canals.</i>
<i>North San Jacinto</i>	<i>July 22, 1923</i>	<i>6.3</i>	<i>Chimney's toppled, broken windows, 2 critical injuries, no deaths. San Bernardino hospital and Hall of Records badly damaged.</i>
<i>San Jacinto Terwilliger</i>	<i>March 25, 1937</i>	<i>6.0</i>	<i>Few chimneys damaged, some plaster cracked, a few windows broken. Minimal damage mostly due to sparsely populated area.</i>
<i>Fish Creek Mountains</i>	<i>Oct 21, 1942</i>	<i>6.6</i>	<i>Little damage due to remote location, felt over a large area. Rockslides</i>
<i>Desert Hot Springs</i>	<i>Dec 4, 1948</i>	<i>6.0</i>	<i>Widespread damage. In Los Angeles, a 5,800 gallon water tank split, water pipes broken in Pasadena, at UCLA, and San Diego. Walls cracked in Escondido and Corona.</i>
<i>1954 San Jacinto</i>	<i>March 19, 1954</i>	<i>6.4</i>	<i>Minor widespread damage. Parts of San Bernardino experienced a temporary blackout.</i>
<i>Borrego Mountain</i>	<i>April 8, 1968</i>	<i>6.5</i>	<i>Largest most damaging earthquake in 16 years. Damage across most of Southern California. Landslides, huge boulders thrown.</i>
<i>Lytle Creek</i>	<i>Sept. 12, 1970</i>	<i>5.2</i>	<i>Landslides, rock falls, 4 injuries. San Bernardino radio station knocked off the air.</i>
<i>White Wash</i>	<i>Feb 25, 1980</i>	<i>5.5</i>	<i>Landslides. Windows and dishes broken. Fire broke out in Rancho Mirage due to a gas line rupture in an empty home.</i>
<i>1988 Upland and Corona</i>	<i>June 26, 1988 and Feb 28, 1990</i>	<i>4.7 and 5.4 respectively</i>	<i>Landslides, damage to San Antonio Dam, 38 minor injuries. Public-\$4.87M; business-\$4.7M; private-\$2,4M; total-\$12M; 501 homes and 115 businesses damaged or destroyed.</i>
<i>North Palm Springs</i>	<i>July 8, 1986</i>	<i>5.6</i>	<i>29 injuries. Destruction or damage of 51 homes. Landslides. Damage over \$4M.</i>
<i>Joshua Tree</i>	<i>April 22, 1992</i>	<i>6.1</i>	<i>Minor injuries. Near Landers</i>

<p><i>2 separate earthquakes: Landers and Big Bear</i></p>	<p><i>June 28,1992</i></p>	<p><i>Landers 7.3 Big Bear - 6.4</i></p>	<p><i>Landslides in San Bernardino Mountains. Near Landers. Substantial damage in Big Bear and Landers. Landers earthquake was the largest earthquake in Southern California in 40 years. Earthquake ruptured 5 separate faults. Total rupture length was 53 miles. One death, 402 injuries. Private-\$47.5M; business-\$17M; public-\$26.6M; total-\$91M; 77 homes destroyed, 4,369 homes damaged, 139 businesses damaged.</i></p>
<p><i>Hector Mine</i></p>	<p><i>Oct. 16, 1999</i></p>	<p><i>7.1</i></p>	<p><i>Very remote location. Ruptured in both directions from the epicenter. Near the District's service area.</i></p>

Figure 2: USGS Shake Map and Table for Shake Out M7.8 Scenario V2



PERCEIVED SHAKING	Not felt	Weak	Light	Moderate	Strong	Very strong	Severe	Violent	Extreme
POTENTIAL DAMAGE	none	none	none	Very light	Light	Moderate	Moderate/Heavy	Heavy	Very Heavy
PEAK ACC. (%)	<17	.17-1.4	1.4-3.9	3.9-9.2	9.2-18	18-34	34-65	65-124	>124
PEAK VEL. (cm/s)	<0.1	0.1-1.1	1.1-3.4	3.4-8.1	8.1-18	18-31	31-60	60-116	>116
INSTRUMENTAL INTENSITY	I	II-III	IV	V	VI	VII	VIII	IX	X+

As shown above, the table within the figure presents the earthquake profile findings for the District’s service area. The ground motion findings indicate the peak ground acceleration within the District’s service area could exceed 65 percent. Typically, any acceleration over 30 percent is considered Strong to Severe. Also, the USGS reports there is a 97% probability that Southern California will have a 7.6 scale earthquake within the next 30 years.

Earthquake Damage to Water Reservoir's



Earthquake Damage to Water Reservoir





Earthquake, Ground Fracture and Pipeline Failure Above and Below



Earthquake, Ground Fracture and Pipeline Failure



Earthquake Damage to Water Well

4.2.2 Climate Change/Drought

Climate Change

Probability: **Highly Likely**

Impact: **Catastrophic**

General Definition: Climate change could increase water demands while lowering the groundwater table. This would result in increased pumping costs and may require installing deeper water supply wells. Extreme weather events will increase runoff and flash flooding while reducing the groundwater recharge.

Description: Climate Change is a change in the statistical distribution of weather patterns when that change lasts for an extended period (i.e., decades to millions of years). Climate change may refer to a change in average weather conditions, or in the time variation of weather around longer-term average conditions (i.e., more or fewer extreme weather events). Climate change is caused by factors such as biotic processes, variations in solar radiation received by Earth, plate tectonics,

and volcanic eruptions. Certain human activities have also been identified as significant causes of recent climate change, often referred to as *global warming*.

Mitigation: Monitor groundwater levels and evaluate long-term trends. Study the long-term viability of the groundwater aquifer. Evaluate and possibly implement obtaining water from the State water projects. See Water Master Plan for other options to supply more water to the area.

4.2.3 Terrorist Event

Probability: **Highly Likely**

Impact: **Catastrophic**

Description: When a person or group of people strike mayhem within a population by threatening the trust of a population. To kill or injure people to make a point to the terrorist cause and to cause fear with the population to further their cause. In the case of a public water system, to make the water non-drinkable by polluting the water or render the water in the system or the system infrastructure useless to serve water to the public.

4.2.4 Power Failure

Probability: **Likely**

Impact: **Critical**

General Definition: Long-term power failures affect the delivery of water from the wells that feed the water system. The District pumps ground water from the underground aquifer into the distribution system as potable water and has minimal treatment systems in place. Without power from the local utility, potable water in some reservoirs would be exhausted within 3 to 5 days in the winter months and 2 days in the summer months.

Description: Power failure is the loss of Electrical power coming from Southern California Edison, who is the only supplier of electrical power to the District.

Mitigation: Purchase additional generators for back-up power to be able to power up wells and booster stations in the event of a long-term power failure.

4.2.5 Flash Flooding/Flooding Hazard

Probability: **Likely**

Impact: **Catastrophic**

General Definition: An unusually heavy rain in a concentrated area, over a short or long period that collects on the ground in low areas of the land. Flash Flooding occurs when there are large amounts of rainfall in areas where the water runs off to lower elevations. Typically, Flash Flooding happens in the desert, where there is little vegetation to hold or stop the water.

Description: Flash flooding can occur in the summer as well as the winter. Monsoon Season is typically in June and July of each year. During Monsoons, heavy rainstorms that form in the Gulf of Mexico move into Arizona, New Mexico, Texas, and the Deserts of California. These storms bring powerful winds and heavy rains within a short period and can produce two to five inches of rain within a half-hour period. There is no flood control infrastructure in this area of San Bernardino County. Many roads in the District's service area are unpaved, dirt roads.

Mitigation: Install flood control walls to direct Flash Flood waters away from facilities and lower pipelines where needed.

FEMA Flash Flooding and or Flood Inundation Mapping:

The FEMA 500-year flood map is included below. 500-year flooding is only in a small portion of the service area along the river bottom area where most of the District's water supply wells are located. Most of the well-motors are installed on elevated concrete pads that raise the well- motor to a height above the 500-year high water elevation. The District's Fluoride Removal Plant is in the middle of the 100-year flood plain, as Identified by FEMA. This facility was raised above the flood plain, by raising the elevation of the land the building is built on, thus, mitigating the damage from a 100-year flood.

Flooding only happens when water can collect in valleys or lower laying areas. The District is located in a large desert valley, where water runs off from higher mountainous areas on its way to the dry lake area and dry river bed on the desert floor. These waters are very dangerous, since the waters can come from many miles away at very fast speeds. These waters rage through the jurisdiction from the west to the east collecting in the wash area noted on the map. These washes run from the south to the north through the District's service area.

Figure 3: 100/500-year Flood Map

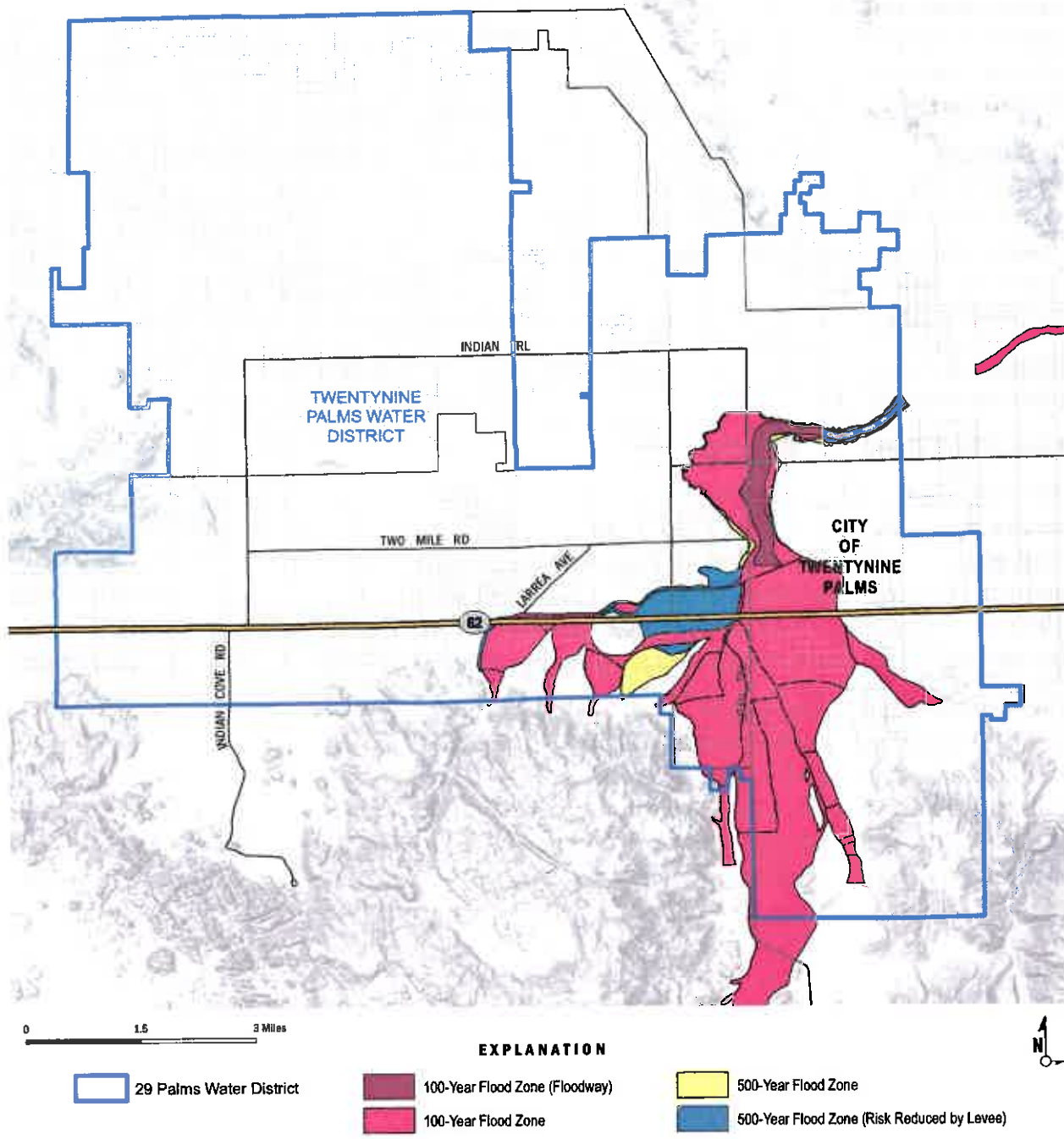


Table 5: Flash Flooding/Flooding History

Date of event	Type of Damage	Amount of Damage	Statewide or Local
Dec-55	74 deaths	\$200 M	State wide
Apr-58	13 deaths, several injuries	\$20 M, plus \$4 M agricultural	State wide
Fall 1965	Abnormally heavy and continuous rainfall.	Public- \$5.8 M; private \$16.0 M; Total \$21.8 M	Riverside, San Bernardino, Ventura, San Diego Counties
Winter 1966	Abnormally heavy and continuous rainfall.	Public- \$14.6 M; private \$14 M; Total \$28.7 M	Various
Winter 1969	Storms, flooding, 47 dead, 161 injured. An alluvial flood and debris flow on Deer Creek in San Bernardino County killed 11 people.	Public- \$185 M, Private - \$115 M; Total -\$300 M	Various
Sep-76	High winds, heavy rains, and flooding	Public-\$65.7 M; private-\$54.3 M; TOTAL-\$120 M	Imperial, Riverside, San Bernardino, San Diego Counties
Winter 1978	14 dead, at least 21 injured	Public-\$73 M; private-\$44 M; Total -\$117 M; 2,538 homes destroyed	Various
Jul-79	No Deaths	Public-\$3.0 M; private-\$22.9 M; Total -\$25.9 M	Riverside
Feb-80	Rain, wind, mud slides, and flooding		Various
Winter 82-83	Heavy rains, high winds, flooding, levee breaks	Public-\$151 M; private-\$159 M; agricultural-\$214 M; TOTAL-\$524 M	Various

Date of event	Type of Damage	Amount of Damage	Statewide or Local
Aug-83	High winds, storms, and flooding; 3 deaths	Public \$10 M, private \$15 M, agricultural \$10 M; TOTAL-\$35 M	Inyo, Riverside, San Bernardino Counties
Feb-92	Flash Flooding, rainstorms, mud slides; 5 deaths	Public-\$95 M; private-\$18.5 M; business-\$8.5 M, agricultural-\$1.5 M; TOTAL-\$123 M	Los Angeles, Ventura, Kern, Orange, San Bernardino Counties
Dec-92	Snow, rain, and high winds, 20 deaths, 10 injuries	Total - \$600 M	Various
Jan-95	11 deaths	Public-\$299.6 M; individual-\$128.4 M; businesses \$58.4 M; highways-\$158 M; ag-\$97 M; TOTAL-\$741.4 M; damage to homes: major-1,883; minor-4, 179; destroyed-370.	Various
Feb-95	17 deaths	Public property-\$190.6 M; individual-\$122.4 M; business-\$46.9 M; highways-\$79 M; ag-\$651.6 M; TOTAL-approximately \$1.1 billion; damage to homes: major-1,322; minor-2,299; destroyed-267	57 counties (all except Del Norte)
Feb-98	17 deaths	\$550 M	Various
Dec. - 03	15 deaths	\$30 M	San Bernardino, Waterman Canyon, Lytle Creek
Jan. 04	None	\$20,000 public property	San Bernardino County High Desert
October 2010	None	\$2.5 M	Flash flooding San Bernardino County High Desert
Dec. 2010 and Jan. 2011	None	\$18 M San Bernardino/Highland, High Desert, San Bernardino Mountains, Forest Falls	Various location in San Bernardino County

Date of event	Type of Damage	Amount of Damage	Statewide or Local
May 2012 March 2014	None	\$50,000	S.B. County High Desert Various



Flash Flooding in Twentynine Palms Water District's Service Area



Flash Flooding in Twentynine Palms Water District's Service Area



Flash Flooding in Twentynine Palms Water District's Service Area



Flash Flooding Mojave Desert 2014

4.2.6 Freezing Event

Probability: **Unlikely**

Impact: **Limited**

General Definition: The temperature range in the Morongo Basin is quite extreme. Temperatures range from a low of 40 degrees in the winter to a high of 115 degrees in the summer months. The District had a major freezing event during the winter of 2010 and 2013 that froze water in the pipes coming out of a wellhead. Freezing can cause damage to the pump motor and rupture the pipe.

Description: High desert locations are known to have a wide range between summer and winter temperatures. It is not uncommon to have summer temperatures in the low 100's and winter temperatures below 30 degrees. Winter storms coming down from Alaska cause rain and cold temperatures, but in the high desert these storms cause snow and freezing temperatures. The high desert is at an elevation of 1,988 feet above sea level. Cold winter storms can drive the temperatures below 20 degrees, freezing water pipes coming out of wells, in homes and businesses. The freezing temperatures cause pipes to burst or restricting water flow to residents and businesses. The District can become inundated with "no water" calls from customers- because of the frozen pipes. The District warns customers each year to protect their pipes from freezing. The District receives hundreds of calls during a freezing event, which takes manpower away from other issues and directs resources to customer calls.

Mitigation: Insulate above ground piping. Install pipeline heating systems to keep the water in the wellhead and output pipelines from freezing.

4.2.7 Long Term Drought

Probability: Highly Likely

Impact: Catastrophic

General Definition: This is a growing concern in California, as the State has been in a drought for the last 7 years. Northern California has experienced some relief in the winter of 2016, although the El Nino affect that was expected to relieve the drought statewide did not materialize in Southern California. The lack of rain and most importantly the lack of snowfall in the Sierra Nevada mountain range have severally impacted the residents of California.

The desert communities in San Bernardino County are not as affected by drought, because these communities, including the District, receive most of their water supply from groundwater. These communities are dependent on underground water aquifers. TPWD does not purchase water through the State Water project and has no connection, available to the District. The District's underground aquifers are in overdraft and a large portion of the District's wells have elevated levels of naturally occurring fluoride, hexavalent chromium, and arsenic. It is challenging for the District to find alternative water supplies from underground aquifers that meet California's water quality standards without constructing additional water treatment facilities.

Description: California has a long history of droughts. Droughts occur when there are long periods of no rainfall in the State. The cycle of droughts and wet periods are in terms of El Nino and La Nina. A drought is a period of below-average precipitation in a given region, resulting in prolonged shortages in its water supply, weather atmospheric, surface water or ground water.

Mitigation: Construct more water storage capacity. Drill more wells. Develop ways to capture rainwater from the higher mountains during flash flooding events and divert these waters to percolation ponds to recharge the underground aquifers. Seek alternative water supplies by setting up agreements and constructing pipelines to purchase State of California aqueduct water, and water from other agencies.

4.2.8 Fire and Wildfire

Probability: Least Likely

Impact: Limited

Description: Local facility fires are a significant concern. The District's office facilities, computer systems, SCADA system, and operating pump stations are susceptible to fire damage. The consequences include loss of life, buildings, equipment, and property damage.

California is very susceptible to wildfires, especially during the fall and summer months. Southern California has the Santa Ana Winds that develop mostly in the late summer and fall. These winds are known for their high speeds and drying affect, which turn the natural grasses brown and dry the southwest natural vegetation. These winds are also capable of blowing down power lines that are

known to start fires in the mountains and hills. The fires are driven by the high winds and the fires become large events that destroy large areas within cities and towns and cause millions of dollars in damage to property and loss of life.

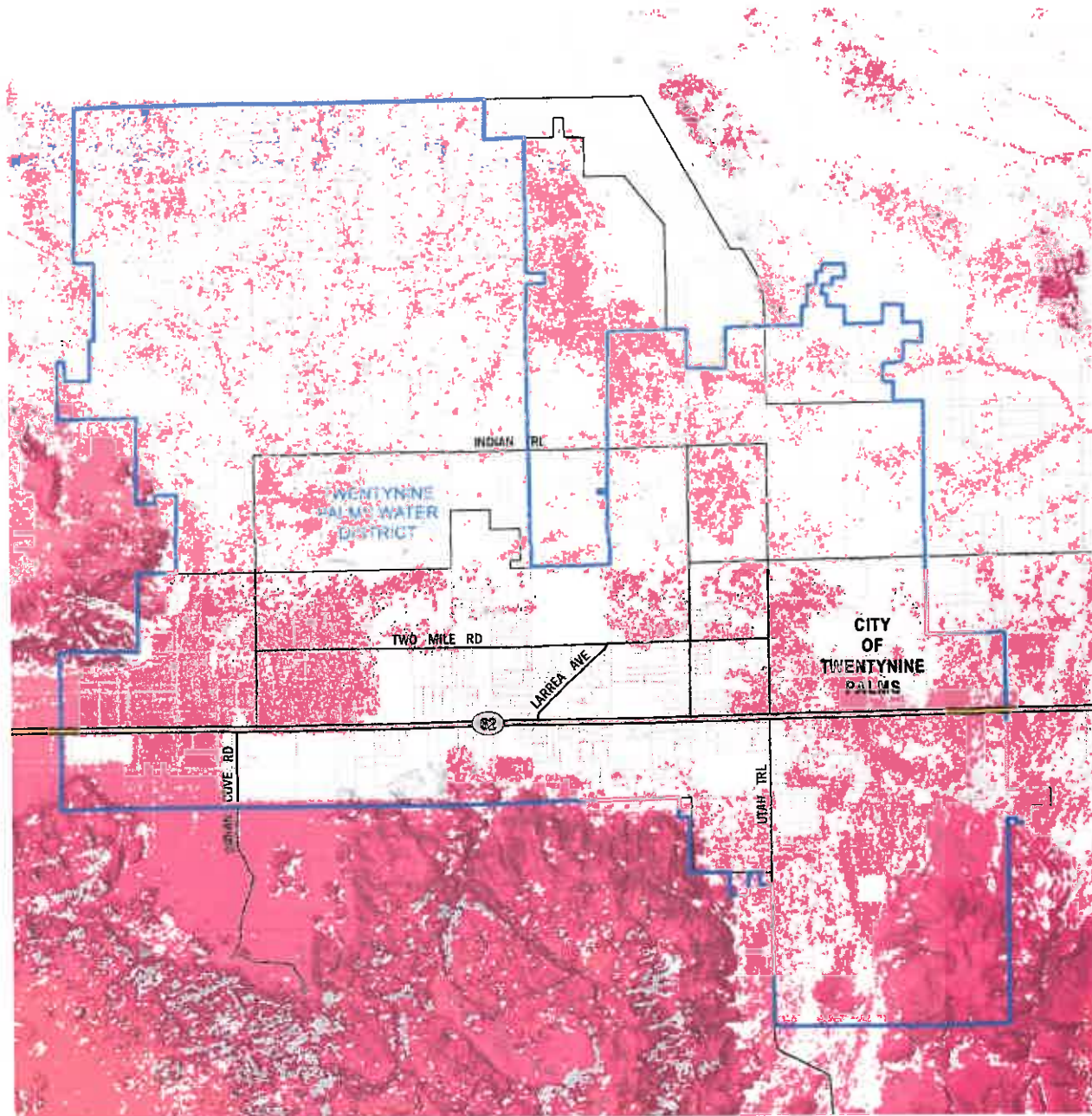
Wildfires are not expected to affect the water infrastructure system because most of the infrastructure is underground and constructed of non-flammable materials. In addition, the local vegetation is such that wildfires are not expected to occur within the District boundaries.

There are, however, some issues from wildfires that can affect the District. During large wildfires, firefighting personnel may draw large amounts of water and strain the water supply system. The fires have a potential to burn through electrical power lines and the District can lose power in critical areas. Without power the District cannot pump groundwater from the aquifer or pump additional water to needed areas.

Mitigation: More water storage, backup generators, improve communications between the District, the public, firefighting personnel, the City, and County Offices of Emergency Services.



Figure 4: Fire Map



0 1.5 3 Miles

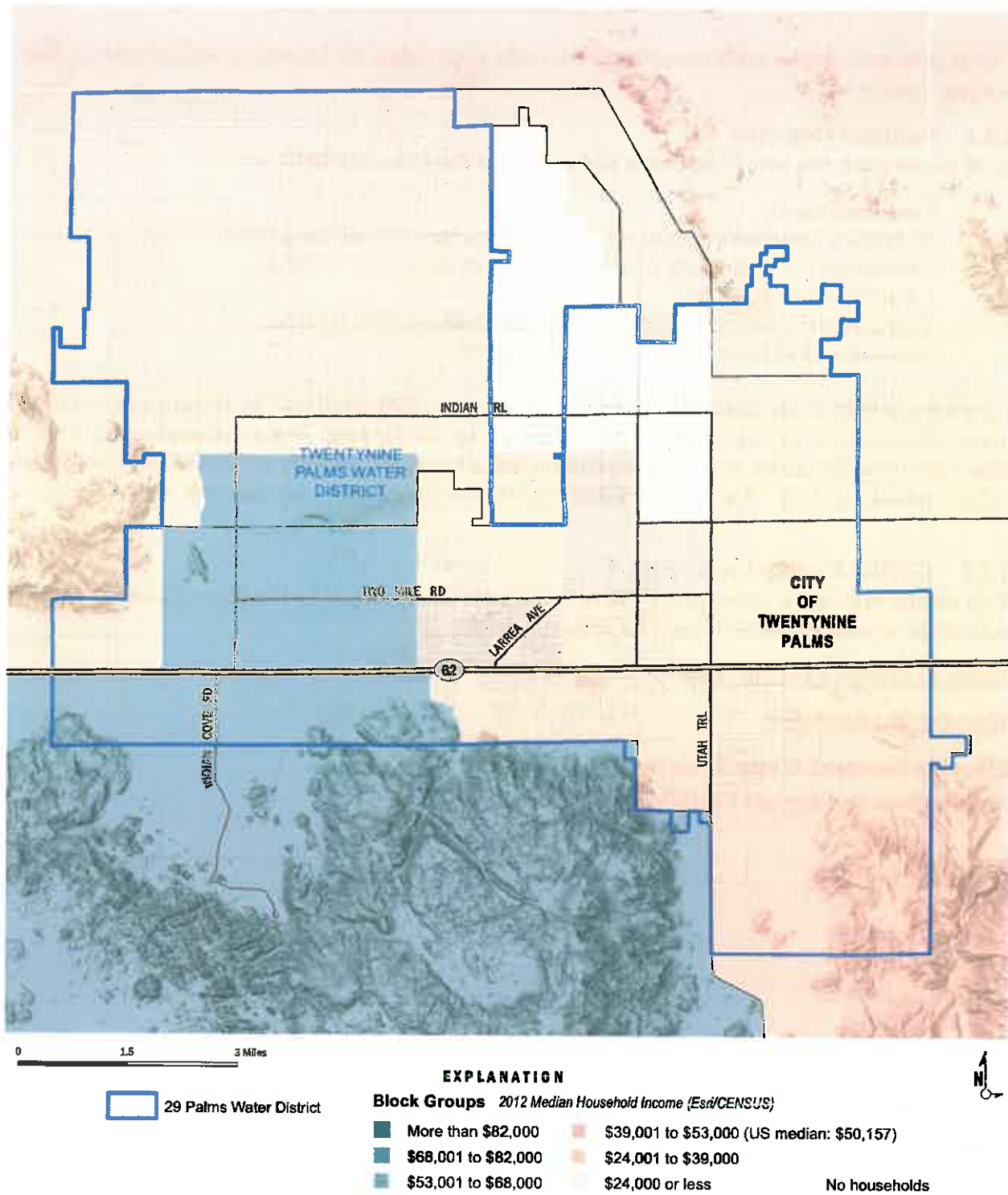
29 Palms Water District
USGS Fire Regime
 21-25 Years
 26-30 Years

EXPLANATION

31-35 Years	51-60 Years	91-100 Years	201-300 Years
36-40 Years	61-70 Years	101-125 Years	301-500 Years
41-45 Years	71-80 Years	126-150 Years	501-1000 Years
46-50 Years	81-80 Years	151-200 Years	>1000 Years



Figure 5: Population, Median Income



4.3 Inventory Assets

This section provides an overview of the assets in the District and the hazards to which these facilities are susceptible.

4.3.1 Facilities Overview

As of March 2015, the District operates and maintains the following facilities:

- 8 pressure zones
- 10 existing reservoirs with a total storage capacity of 17 million gallons
- 6 existing wells with a total pumping maximum capacity of 6.5MGD
- 1 water treatment plant
- Approximately 200 miles of distribution and transmission facilities (pipe sizes of 4 inches to 16 inches in diameter).

Figure 4 is a map of the District's facilities. This figure illustrates how the facilities are arranged to provide potable drinking water to the residents of the service area. Water demands in the service area vary throughout the year with maximum daily summer demands estimated at 3.89 million gallons per day in June. The District relies entirely on groundwater for their raw water supply.

4.3.2 Critical Facility List

This section provides a listing of the District's facilities as developed by the Planning Team. This list is in order of most critical to least critical, by category.

Table 6: Critical Facilities List:

Most Critical Facilities:

Fluoride Removal Water Treatment Plant

Main offices and Repair Facilities

Booster Facilities:

Cactus Booster

Lupine Booster

Two-Mile Booster

Wells:

Well TP-1

Well 14

Well 17

Well 16

Well 12

Well 15

Reservoirs:

Campbell Reservoir

Hanson Reservoir and Booster Pumps

Donnell

2260 Reservoir

Plant 11 A/B Reservoir

Plant 11 A/B Booster pumps

Stockwell Reservoir

2400 Reservoir and Booster

Worthing Reservoir

Desert Heights Reservoir and Pneumatic System

4.4 Vulnerability Assessment

The team reviewed pictures of each of the District's facilities. The pictures were presented with a map of the area to convey the location within the system as well as the site-specific characteristics of the facility. The team members each have a long history in the area and a knowledge of the potential disasters and emergencies that can occur in and around the community. The internal team members have the knowledge to assess the system and give valuable input into the assessment and vulnerabilities to the system.

4.4.1 Methodology

The team reviewed the District's facilities and applied their local and operational knowledge to evaluate how vulnerable each facility is to a potential hazard. The team ranked the facilities by their importance to the District's production and delivery of drinking water, and then using this ranking the team developed an estimate of potential economic impact that could be caused by the high priority hazards. A percentage based on ranking was applied to the District's projected- 2016-2017 annual water revenue (4.6 million) to obtain the annual economic impact for each facility

4.4.2 Earthquake Vulnerability Analysis

Population: Approximately 100% of District's population is vulnerable.

Critical Facilities: Approximately 100% of District's critical facilities are vulnerable.

All facilities are vulnerable in the event of a major earthquake within the District's boundaries. There are many nearby faults that could affect the District's facilities: Emerson, Camp Rock, Big Bear, Garlock, Blue Cut, Pinto Mountain and the San Andreas Faults are nearby. If any of these faults experience a rupture of 6.5 magnitudes or more, it would have a negative effect on District's facilities.

Estimated Losses: The economic loss resulting from this hazard is approximately \$8 million. The loss from damage to structures and pipelines, from this hazard is approximately \$25 million.

Losses are estimated assuming:

1. Lost revenue from water sales for 12 months based on the 2016/2017 projected Twentynine Palms Water District revenue
2. Time to restore the system to full function, 24 months
3. All the District's critical facilities are at risk, including 80% of the District's pipelines.
4. Without the critical facilities, no revenue can be generated for the District.

4.4.3 Flash Flooding Vulnerability Analysis

Population: Approximately 40% of the District's population is vulnerable.

Critical Facilities: Approximately 40% of the District's critical facilities are vulnerable.

Flash Flooding only happens when heavy and concentrated rains occur in steep basin areas where runoff is channeled through limited areas. District is in the foothills or the valley floor, where water runs off from higher mountainous areas on its way to the dry lake areas on the desert floor. These waters are very dangerous because they can originate many miles away and travel at fast speeds. Flash flood waters rage through the service area from the south or the north and collect in the wash area or low land area's mostly on the south side of the valley.

4.4.4 Long Term Drought Vulnerability Analysis

Population: Approximately 100% of the District's population is vulnerable.

Critical Facilities: Approximately 100% of District's critical facilities are vulnerable.

The specific critical facilities vulnerable in the District is:

The wells are critical to drought because they supply groundwater for the District. During a long-term drought, the groundwater levels become lower. During the current drought, the decrease water level has not been significant, although pumping costs increase due to greater lift required. It is also possible that wells and pumps may be too shallow if the groundwater level drops significantly. In these instances, the pump shaft and bowls may need to be lowered deeper in the well. In extreme cases, a new and deeper well may be required.

Of the critical facilities listed, 12 are wells. Currently, these wells are operating without significant hardship during the ongoing drought. Reservoirs are not considered critical in a drought, however Pipelines can collapse, if the system is left with no water.

The District adopted Resolution 14-12 and 15-7, passed on August 27, 2014 and May 27, 2015 respectively, which, established the policy and conservation measures needed during drought conditions. Also, California Governor, Jerry Brown has declared a Water State of Emergency for the entire State, mandating water conservation by all residents.

Estimated Losses: The economic loss resulting from this hazard is approximately \$60,000 a month.

The loss or damage to structures from this hazard is approximately \$2 million, due to collapsed pipelines, booster pumps, and contamination to the system.

4.4.5 Climate Change Vulnerability Analysis

Population: 100% of the Districts population is vulnerable to climate change.

Critical Facilities: The groundwater aquifer is the most vulnerable component of the District's critical facilities (or resources). Without the aquifer, there is no water supply.

Climate change is an immediately sensitive issue in coastal communities, with increasing ocean waters, sea surges, tidal issues and surging waves. Northern California and in turn, the Central Valley are being affected by recent changes in weather patterns. In the inland desert regions of California, climate change is a longer-term concern. As the weather becomes hotter and dryer in a changing climate, water would need to be captured during the rainy periods to recharge the underground aquifers, outdoor watering would be restricted, and other conservation measures would be needed.

As climate change results in more extreme weather patterns, the District would need to become more resilient in the management of groundwater resources. Planning for lower groundwater tables may include monitoring and studying the aquifer in greater detail, as well as installing deeper water supply wells. Enhanced groundwater recharge opportunities may also be explored and implemented.

4.4.6 Wildfires Vulnerability Analysis

Population: Approximately 20% of the District's population is vulnerable.

Critical Facilities: Approximately 10% of the District's critical facilities are vulnerable.

Wildfires in the desert communities are common. On July 9, 2006, lightning ignited natural vegetation in several locations that became known as the Sawtooth, Water, and Ridge fires. These three fires merged into one fire known as the Sawtooth fire, which burned two-miles into Yucca Valley, destroying over 300 structures. Yucca Valley is approximately 20 miles from Twentynine Palms Water District's service area. Fires are not cause concern in Twentynine Palms, as there is less vegetation in this area of the Desert. There are ancillary issues at hand, such as power failure due to downing power lines. The other ancillary affect is the loss of water in the distribution system, as the fire fighters draw large amounts of water from the system.

4.4.7 Dam Inundation Vulnerability Analysis

Population: None: There are no Dam's in or around this service area.

Critical Facilities: There are no earthen or concrete dams or any other type of dam in the District's Service area.

4.4.8 Power Failure Vulnerability Analysis

Population: 100% of the District's population are vulnerable.

Critical Facilities: Approximately 100% of the critical facilities are vulnerable.

Power failures are common in the high desert communities, due in a large part of the aging and undersized electrical service to the communities and the fact that the high desert communities still have above ground electrical systems. Above ground electrical systems are vulnerable to high winds, snow, earthquakes, and wildfires. High winds snap electrical poles, cable and wires. Wildfires burn the supporting poles and cause power outages. Also, power lines short circuit during fires, windstorms, earthquakes and snow storms, which lead to long-term outages.

4.4.9 Freezing Event Vulnerability Analysis

Population: 10% of the District's critical facilities are vulnerable.

Freezing events rarely occur in this area., but have happened in the past. During these events water in well-heads, pipelines that are above ground, water backflow valves, and fire hydrants can freeze.

4.4.10 Terrorist Event Vulnerability Analysis

Population: 100% of the District's critical facilities are vulnerable.

The Twentynine Palms Water District has a large population of U.S Marine's living in the community, due to the fact the world's largest U.S Marine Base is within 5 miles of the community. There are two large apartment complexes in the service area that are owned by the Marine Base and house military and their families. Terrorist events could happen at any time. Normally terrorist events are looking at making the biggest impact to the public and the U.S Military. Terrorist events could range from water contamination events to dirty bombs. Water contamination events are the main concern of the team.

4.4.11 Potential Loss Estimate

Replacement costs listed in this section were arrived by utilizing the District's insurance documentation. The Joint Powers Insurance Authority (JPIA) has listed the replacement cost value for each facility. The team has communicated with the JPIA on the values listed below and was assured that the estimated costs are accurate. Table 13, summarizes the economic impacts on the critical facilities within the District.

Table 13: Economic Impacts on Critical Facilities for the District

Fluoride Removal, Water Treatment Plant

Facility Replacement Cost: \$ 15 million

Estimated Economic Impact: \$ 55,000 a month in lost revenue

Description of Economic Impact: loss of water sales, loss of SCADA Control System, loss of productivity

Main office and Repair Facilities

Facility Replacement Cost: \$ 5 million

Estimated Economic Impact: \$ 15,000 a month in lost revenue

Description of Economic Impact: loss of productivity, accounting, payroll and administrative functions and loss of repair facility

Cactus Booster Station

Facility Replacement Cost: \$ 200,000

Estimated Economic Impact: \$5,000 a month in lost revenue

Description of Economic Impact: loss of water sales

Lupine Booster Station

Facility Replacement Cost: \$ 200,000

Estimated Economic Impact: \$ 5,000 a month in lost revenue

Description of Economic Impact: loss of water sales

Two-Mile Booster Station

Facility Replacement Cost: \$ 200,000

Estimated Economic Impact: \$ 5,500 a month in lost revenue

Description of Economic Impact: loss of water sales

Well TP-1

Facility Replacement Cost: \$ 750,000

Estimated Economic Impact: \$ 55,000 a month in lost revenue

Description of Economic Impact: loss of water sales

Well 14

Facility Replacement Cost: \$ 750,000

Estimated Economic Impact: \$ 25,000 a month in lost revenue

Description of Economic Impact: loss of water sales

Well 17

Facility Replacement Cost: \$ 750,000

Estimated Economic Impact: \$ 22,000 a month in lost revenue

Description of Economic Impact: loss of water sales

Well 16

Facility Replacement Cost: \$ 750,000

Estimated Economic Impact: \$ 22,000 a month in lost revenue
Description of Economic Impact: loss of water sales

Well 12

Facility Replacement Cost: \$ 750,000
Estimated Economic Impact: \$ 20,000 a month in lost revenue
Description of Economic Impact: loss of water sales

Well 15

Facility Replacement Cost: \$ 750,000
Estimated Economic Impact: \$ 20,000 a month in lost revenue
Description of Economic Impact: loss of water sales

Campbell Reservoir

Facility Replacement Cost: \$ 1.0 Million
Estimated Economic Impact: \$ 20,000 a month in lost revenue
Description of Economic Impact: loss of water sales

Hanson Reservoir

Facility Replacement Cost: \$ 1.2 Million
Estimated Economic Impact: \$ 8,000 a month in lost revenue
Description of Economic Impact: loss of water sales

Donnell Reservoir

Facility Replacement Cost: \$ 1.2 Million
Estimated Economic Impact: \$ 13,000 a month in lost revenue
Description of Economic Impact: loss of water sales

2260 Reservoir

Facility Replacement Cost: \$ 1.2 Million
Estimated Economic Impact: \$15,500 a month in lost revenue
Description of Economic Impact: loss of water sales

Plant 11 A/B Reservoirs

Facility Replacement Cost: \$ 2.4 Million
Estimated Economic Impact: \$30,000 a month in lost Revenue
Description of Economic Impact: loss of water sales

Plant 11 A/B Boosters

Facility Replacement Cost: \$ 1.2 Million
Estimated Economic Impact: \$ 25,000 a month in lost revenue
Description of Economic Impact: loss of water sales

Stockwell Reservoir

Facility Replacement Cost: \$ 1.1 Million

Estimated Economic Impact: \$ 19,000 a month in lost revenue
Description of Economic Impact: loss of water sales

2400 Reservoir and Booster

Facility Replacement Cost: \$ 1.2 Million
Estimated Economic Impact: \$ 18,000 a month in lost revenue
Description of Economic Impact: loss of water sales

Worthing Reservoir

Facility Replacement Cost: \$ 1.0 Million
Estimated Economic Impact: \$ 8,000 a month in lost revenue
Description of Economic Impact: loss of water sales

Desert Heights Reservoir

Facility Replacement Cost: \$ 1.0 Million
Estimated Economic Impact: \$ 8,000 a month in lost revenue
Description of Economic Impact: loss of water sales

SECTION 5: COMMUNITY CAPABILITY ASSESSMENT

5.1 Agencies and People

The District is in the Southwestern section of the Mojave Desert within San Bernardino County. The District serves the City of Twentynine Palms and some areas of the County of San Bernardino. The District serves approximately 8,000 service connections and a population of approximately 18,000 customers.

To help mitigate the potential impacts of disasters, District joined the Emergency Response Network of the Inland Empire (ERNIE). This organization consists of water agencies within San Bernardino and Riverside Counties. The ERNIE group of agencies coordinates mutual aid to help each District recover from local emergency issues. The District is also a member of the California Water/Wastewater District Response Network (CalWARN). This organization focuses on mutual aid throughout the State of California.

The District employs 17 people. With the capabilities of ERNIE and CalWARN, the District has the potential of having hundreds of mutual aid workers at its disposal within hours of an emergency.

5.2 Existing Plans

The following emergency related plans apply as appropriate:

- ERNIE Emergency Operations Plan
- CalWARN Emergency Operations Plan

- The District's Illness Injury Prevention Plan (IIPP)
- The District's Urban Water Master Plan

In addition, the District has mutual aid agreements within San Bernardino and Riverside Counties and within the State of California. As a government entity (Special District, within California Law), the District can access the Emergency Managers Mutual Aid (EMMA) and the Emergency Management Assistance Compact (EMAC) for national mutual aid and the National WARN System through the American Water Works Association.

5.3 Regulations, Codes, Policies, and Ordinances

The Urban Water Management and Planning Act was passed in 2010 and requires water suppliers to estimate water demands and available water supplies. The District's updated Urban Water Management Plan (UWMP) was completed in January 2017. UWMPs are required to evaluate the adequacy of water supplies including projections of 5, 10, and 20 years. These plans are also required to include water shortage contingency planning for dealing with water shortages, including a catastrophic supply interruption.

UWMPs are intended to be integrated with other urban planning requirements and management plans. Some of these plans include city and county General Plans, Water Master Plans, Recycled Water Master Plans, Integrated Resource Plans, Integrated Regional Water Management Plans, Groundwater Management Plans, Emergency Response Plans, and others.

The District has an Emergency Response Plan that details how the District will respond to various emergencies and disasters. The District must be prepared to respond to a variety of threats that require emergency actions, including:

- Operational incidents, such as power failure or bacteriological contamination of water associated with the District's facilities.
- Outside or inside malevolent acts, such as threatened or intentional contamination of water, intentional damage/destruction of facilities, detection of an intruder or intruder alarm, bomb threat, or suspicious mail.
- Natural disasters, such as earthquakes or floods and power failures.
- Water Conservation Regulations

The District is also required to follow Standard Emergency Management System (SEMS) and the National Incident Management System (NIMS) and the Incident Command System (ICS) when responding to emergencies.

5.4 Mitigation Programs

The District has completed some mitigation programs. The California Department of Water Resources required the District to raise well pump motors and other wellhead assemblies above

the 500-year flood plain elevation. This was accomplished by installing the motors and wellheads on elevated concrete foundations.

5.5 Fiscal Resources

Fiscal resources for the District include the following:

- Revenue from water sales
- Monthly Service Charge fee
- Water Availability Assessment (On Property Taxes)
- Meter Installation Fee
- If necessary, local bond measures and property taxes

Through the California Department of Water Resources, local grants and/or loans are available for water conservation, groundwater management, studies and activities to enhance local water supply quality and reliability. Project eligibility depends on the type of organization(s) applying and participating in the project, and the specific type of project. More than one grant or loan may be appropriate for a proposed activity. Completing the LHMP will facilitate and obtain grant funding in the future.

SECTION 6: MITIGATION STRATEGIES

6.1 Overview

The purpose of this analysis is to identify projects (actions) that help the District meet the goals and objectives for each priority hazard. The District has identified hazards in the community, assessed those hazards that pose the most significant risk, and identified projects to help reduce and/or eliminate those risks.

6.2 Mitigation Goals, Objectives, and Projects

As discussed in Section 3.5, the process of identifying goals began with a review and validation of the goals and objectives in the District and the San Bernardino County's 2010 Operational Area LHMP. Using the County's 2010 LHMP, the District's Planning Team completed an assessment/discussion of whether each of the goals was valid.

Overall, the primary objective is to protect lives and prevent damages to infrastructure that disrupts water services. Global measures that apply across all hazards include:

- Continually improve the community's understanding of potential impacts due to hazards and the measures needed to protect lives and critical infrastructure;
- The District's Communications/Conservation Officer, should provide public outreach to inform the public of the hazards identified to the drinking water system in emergencies, -

how to conserve water in the event of a disaster and how to obtain drinking water when water may not be available;

- Continually provide State and Local Agencies with updated information about hazards, vulnerabilities, and mitigation measures at the District;
- Review local codes and standards to verify that they protect human life and the District's facilities;
- Review and verify that the District's owned and operated infrastructure meet minimum standards for safety;
- Review the District facilities and developments in high-risk areas to verify that these areas are appropriately protected for potential hazards;
- Identify and mitigate imminent threats to life safety and facility damage.

The four high profile hazards for the District are earthquake, power failure, terrorist events and flash flooding. While other hazards were profiled in previous sections, the District's priority and focus for the mitigation projects will be for the five high profile hazards.

6.2.1 Earthquake, Impact Rating (1) from Table 3, Page 20

Description: *Goal is to avoid injury, loss of life, and damages to property.* The District agrees that strengthening of buildings and fire codes are critical to the protection of property, life and the reduction of seismic-caused damages. These codes help water utilities design and construct reservoirs, pump stations, groundwater wells, and pipelines to resist the forces of nature.

Objectives:

- Design new facilities and upgrade existing facilities to withstand an 8.0 earthquake. The District is located in a high-risk earthquake area with many geologic fault zones.
- Encourage property protection measures for structures located in the area.
- Adopt cost-effective codes and standards to protect life properties and critical infrastructure.
- Establish partnerships with other levels of government and the business community to improve and implement methods to protect property.

Mitigation Projects:

- Flexible pipe joints at wellheads, pump stations, and reservoirs
- Seismic shut-off valves
- Bolt down reservoirs
- Tie down equipment
- Generator hook-up

6.2.2 Climate Change and Long-Term Drought, Impact rating (1) from Table 3, Page 20

Description: Due to Global Warming, there are more extremes in the weather, which mean the summers can be hotter, the winters colder, periods of rain can become less wet or more wet causing flooding. Address expected greater fluctuations in weather patterns, including prolonged dry periods and the drought hazard, through mitigation over the long-term. The objectives listed below have been taken from the declaration of a Drought, State of Emergency for California, signed by Governor Jerry Brown in May of 2015. The California Drought has not affected the District at this point, since the area is always in a drought.

Objectives:

- Increase water supply - creating innovative ways to generate new supplies
- Improve operational efficiency
- Reduce water demand - water conservation has become a viable long-term supply option because it saves considerable capital and operating cost for the District

Mitigation Projects:

- Increase public awareness of water conservation
- Monitor groundwater elevations and evaluate trends
- Increase water pumping capabilities
- Increase groundwater supplies
- Study system interties with other water systems in the area
- Generator hook-ups

6.2.3 Terrorist Events, Impact Rating (1) From Table 3, Page 20

Description:

A person or group of persons willingly causes damage to people or property to forward their goals through intimidation or coercion of a civilian population, to influence the policy of a government either large or small, and to affect a government entity.

Objective:

- Prevent damage to critical water facilities
- Educate the public on terrorism
- Enhance safety within the region

Mitigation Projects:

- Train the public in “if you see something, say something.”
- Improved SCADA controls

- Install video cameras at critical facilities
- Increase security measures at critical facilities
- Build block walls around critical facilities for additional security
- Generator hook-up

6.2.4 Power Failure, Impact Rating (2) from Table 3, Page 20

Description: A sudden failure of the electric distribution system to a large geographical area that includes water wells and booster pumps thereby limiting water deliveries.

Objective:

- Provide proper operation of critical facilities during power failures
- Provide water delivery for firefighting and other critical needs;

Mitigation Projects:

- Purchase generators and transfer switches that can power critical facilities during a power failure.
- Public education to promote water conservation during power outages.
- Communication/Conservation officer should develop outreach to the public to educate residents on the hazards to the utility and operation of the utility in emergencies
- Generator hook-up

6.2.5 Flash Flooding, Impact Rating (2) from Table 3, Page20

Description: A sudden, localized flood of great volume and short duration, typically caused by unusually heavy rain in a semiarid area. Flash floods can reach its peak volume in a matter of a few minutes and often carry large loads of mud and rock fragments. Flash flooding is common in the arid desert areas of California, Arizona, Nevada and New Mexico.

Objective:

- Prevent damage to water distribution facilities
- Protect loss of critical facilities
- Mitigate cost of damages during and after a flash flood

Mitigation Projects:

- Install block or concrete diversion walls
- Deepen pipelines
- Install concrete protection of pipelines at critical locations

6.2.6 Freezing Event, Impact Rating (4) from Table 3, Page 20

Description: A period of cold temperatures that can freeze still or slow-moving water. Pipelines that are above ground, or above the frost line, small diameter, and with low flow rates are most susceptible to freeze damage. When water freezes inside of a pipe, the water expands and ruptures the pipe. Water will not flow through an ice blockage.

Objectives:

None, as freezing events are a rarity in this service area

Mitigation Projects:

None

6.2.7 Mitigation Priorities

Mitigation measures are identified for District's critical facilities. Each measure is presented with an estimated budget. This list is in the order of priority.

Main Office/ Maintenance Yard

- **Mitigation to Earthquake:**

1. Block Wall around facility
2. Estimated Mitigation Budget: \$300,000
3. Redundant SCADA system Budget: \$40,000
4. Redundant Two-Way Radio System: \$10,000
5. Estimated Mitigation Budget: \$10,000
6. Generator hook-up: Budget \$40,000
7. Generator Budget: \$200,000

- **Mitigation to Flooding:**

1. Block Wall Around Facility Budget: \$300,000
2. Block Diversion Wall at Front West side \$75,000
3. Redundant SCADA Estimated Mitigation Budget: \$40,000
4. Redundant Two-Way Radio System Budget: \$10,000
5. Estimated Mitigation Budget: \$10,000

- **Mitigation to Terrorist Events:**

1. Security Windows and Door on front and sides of main office, Budget: \$50,000
2. Redundant SCADA system Budget: \$40,000
3. Redundant Two-Way Radio System Budget: \$10,000
4. Estimated Mitigation Budget: \$10,000

5. Generator hook-up: Budget \$50,00

Fluoride Removal, Water Treatment Plant:

- **Mitigation to Earthquake**

1. Flex Couplings Chemical Feed Lines. Budget: \$75,000
2. Flex Couplings on Water Feed and System Lines. Budget \$50,000
3. Back up SCADA System. Budget: \$40,000

- **Mitigation to Flooding:**

1. Flood Diversion Wall. Budget: \$250,000
2. Backup Generator and Transfer Switch. Budget. \$225,000

- **Terrorist Events:**

1. Block Wall and Iron Gates Around Facility. Budget: 2.5 Million
2. Backup Generator and Transfer Switch. Budget: \$225,000

Cactus Booster Station

- **Mitigation to Earthquake:**

1. Flex Coupling. Budget: \$35,000
2. Generator and Transfer Switch. Budget: \$225,000

- **Mitigation to Flooding:**

1. Block Wall Around Facility. Budget: \$150,000

- **Mitigation to Terrorist Events:**

1. Block Wall Around Facility. Budget: \$150,000
2. Security Camera's and alarm System. Budget: \$20,000

Lupine Booster Station

- **Mitigation to Earthquake:**
 1. Flex Couplings on Piping. Budget: \$10,000
 2. Generator and Transfer Switch. Budget: \$ 25,000

- **Mitigation to Flooding:**
 1. Block Diversion Wall. Budget: \$150,000

- **Mitigation to Terrorist Events**
 1. Video Surveillance and Alarm System. Budget: \$20,000

Two Mile Booster Station

- **Mitigation to Earthquake:**
 1. Flex Couplings on Piping. Budget: \$10,000
 2. Generator and Transfer Switch. Budget: \$225,000

- **Mitigation to Flooding:**
 1. Block Diversion Wall. Budget: \$150,000

- **Mitigation to Terrorist Events:**
 1. Video Surveillance System. Budget: \$20,000
 2. Alarm system for gate and Reservoir: \$10,000

Well TP-1

- **Mitigation to Earthquake:**
 1. Generator and Transfer Switch. Budget: \$225,000
 2. Flex Coupling. Budget: \$ 100,000
 3. Seismic Shut Off Valve. Budget: \$35,000

- **Mitigation to Flooding:**

1. Flood Control walls to direct floodwater away from property. Budget: \$150,000

- **Mitigation to Terrorist Events:**

1. Block Wall Around Facility. Budget: \$250,000
2. Video Surveillance Camera and Alarm System. Budget: \$20,000

Well 14

- **Mitigation to Earthquake:**

1. Generator and Transfer Switch. Budget: \$225,000
2. Flex Coupling. Budget: \$10,000
3. Seismic Shut Off Valve. Budget: \$35,000

- **Mitigation to Flooding:**

1. Flood Control walls to direct floodwater away from property. Budget: \$ 150,000
2. Enclose facility with block walls. Budget: \$250,000

- **Mitigation to Terrorist Events:**

1. Block Wall Around Facility. Budget: \$250,000
2. Video Surveillance Camera and Alarm. Budget: \$20,000

Reservoir 18

- **Mitigation to Earthquake:**

1. Generator and Transfer Switch. Budget: \$225,000
2. Flex Coupling. Budget: \$10,000
3. Seismic Shut Off Valve. Budget: \$35,000

- **Mitigation to Flooding:**

1. Flood Control walls to direct floodwater away from property. Budget: \$150,000
2. Enclose facility with block walls. Budget: \$250,000

- **Mitigation to Terrorist Events:**
 1. Block Wall Around Facility. Budget: \$250,000
 2. Video Surveillance Camera and Alarm. Budget: \$20,000

Well 17

- **Mitigation to Earthquake:**
 1. Generator and Transfer Switch. Budget: \$225,000
 2. Flex Coupling. Budget: \$10,000
 3. Seismic Shut Off Valve. Budget: \$35,000
- **Mitigation to Flooding:**
 1. Flood Control walls to direct floodwater away from property. Budget: \$150,000
 2. Enclose facility with block walls. Budget: \$250,000
- **Mitigation to Terrorist Events:**
 1. Block Wall Around Facility. Budget: \$250,000
 2. Video Surveillance Camera and Alarm. Budget: \$20,000

Well 16

- **Mitigation to Earthquake:**
 1. Generator and Transfer Switch. Budget: \$225,000
 2. Flex Coupling. Budget: \$ 10,000
 3. Seismic Shut Off Valve. Budget: \$35,000
- **Mitigation to Flooding:**
 1. Flood Control walls to direct floodwater away from property. Budget: \$150,000
 2. Enclose facility with block walls. Budget: \$250,000
- **Mitigation to Terrorist Events:**
 1. Block Wall Around Facility. Budget: \$250,000
 2. Video Surveillance Camera and Alarm. Budget: \$20,000

Well 12

- **Mitigation to Earthquake:**

1. Generator and Transfer Switch. Budget: \$225,000
2. Flex Coupling. Budget: \$10,000
3. Seismic Shut Off Valve. Budget: \$35,000

- **Mitigation to Flooding:**

1. Flood Control walls to direct floodwater away from property. Budget: \$150,000
2. Enclose facility with block walls. Budget: \$250,000

- **Mitigation to Terrorist Events:**

1. Block Wall Around Facility. Budget: \$250,000
2. Video Surveillance Camera and Alarm. Budget: \$20,000

Well 15

- **Mitigation to Earthquake:**

1. Generator and Transfer Switch. Budget: \$225,000
2. Flex Coupling. Budget: \$10,000
3. Seismic Shut Off Valve. Budget: \$35,000

- **Mitigation to Flooding:**

1. Flood Control walls to direct floodwater away from property. Budget: \$150,000
2. Enclose facility with block walls. Budget: \$250,000

- **Mitigation to Terrorist Events:**

1. Block Wall Around Facility. Budget: \$250,000
2. Video Surveillance Camera and Alarm. Budget: \$20,000

Campbell Reservoir

- **Mitigation to Earthquake:**
 1. Generator and Transfer Switch. Budget: \$225,000
 2. Flex Coupling. Budget: \$10,000
 3. Seismic Shut Off Valve. Budget: \$35,000
- **Mitigation to Flooding:**
 1. Flood Control walls to direct floodwater away from property. Budget: \$150,000
 2. Enclose facility with block walls. Budget: \$250,000
- **Mitigation to Terrorist Events:**
 1. Block Wall Around Facility. Budget: \$250,000
 2. Video Surveillance Camera and Alarm. Budget: \$20,000

Hanson Reservoir

- **Mitigation to Earthquake:**

Donnell Reservoir

- **Mitigation to Earthquake:**
 1. Generator and Transfer Switch. Budget: \$225,000
 2. Flex Coupling. Budget: \$10,000
 3. Seismic Shut Off Valve. Budget: \$35,000
 4. Diversion Channels in Case of Reservoir failure. Budget: \$1.5 Million
 5. Block Wall for Water Containment. Budget: \$1.0 Million
- **Mitigation to Flooding:**
 1. Flood Control walls to direct floodwater away from property. Budget: \$150,000
 2. Enclose facility with block walls. Budget: \$250,000
- **Mitigation to Terrorist Events:**
 1. Block Wall Around Facility. Budget: \$250,000
 2. Video Surveillance Camera and Alarm. Budget: \$20,000

2260 Reservoir

- **Mitigation to Earthquake:**

1. Generator and Transfer Switch. Budget: \$225,000
2. Flex Coupling. Budget: \$10,000
3. Seismic Shut Off Valve. Budget: \$35,000

- **Mitigation to Flooding:**

1. Flood Control walls to direct floodwater away from property. Budget: \$150,000
2. Enclose facility with block walls. Budget: \$250,000

- **Mitigation to Terrorist Events:**

1. Block Wall Around Facility. Budget: \$250,000
2. Video Surveillance Camera and Alarm. Budget: \$20,000

Plant 11- A/B Reservoirs

- **Mitigation to Earthquake:**

1. Generator and Transfer Switch. Budget: \$225,000
2. Flex Coupling. Budget: \$10,000
3. Seismic Shut Off Valve. Budget: \$35,000

- **Mitigation to Flooding:**

1. Flood Control walls to direct floodwater away from property. Budget: \$150,000
2. Enclose facility with block walls. Budget: \$250,000

- **Mitigation to Terrorist Events:**

1. Block Wall Around Facility. Budget: \$250,000
2. Video Surveillance Camera and Alarm. Budget: \$20,000

Plant 11 A/B Boosters

- **Mitigation to Earthquake:**

1. Generator and Transfer Switch. Budget: \$225,000
2. Flex Coupling. Budget: \$10,000
3. Seismic Shut Off Valve. Budget: \$35,000

- **Mitigation to Flooding:**

1. Flood Control walls to direct floodwater away from property. Budget: \$150,000
2. Enclose facility with block walls. Budget: \$250,000

- **Mitigation to Terrorist Events:**

1. Block Wall Around Facility. Budget: \$250,000
2. Video Surveillance Camera and Alarm. Budget: \$20,000

Reservoir 2400 and Booster

- **Mitigation to Earthquake:**

1. Generator and Transfer Switch. Budget: \$225,000
2. Flex Coupling. Budget: \$10,000
3. Seismic Shut Off Valve. Budget: \$35,000

- **Mitigation to Flooding:**

1. Flood Control walls to direct floodwater away from property. Budget: \$150,000
2. Enclose facility with block walls. Budget: \$250,000

- **Mitigation to Terrorist Events:**

1. Block Wall Around Facility. Budget: \$250,000
2. Video Surveillance Camera and Alarm. Budget: \$20,000

Worthing Reservoir

- **Mitigation to Earthquake:**

1. Generator and Transfer Switch. Budget: \$225,000

2. Flex Coupling. Budget: \$ 10,000
3. Seismic Shut Off Value. Budget: \$35,000

- **Mitigation to Flooding:**

1. Flood Control walls to direct floodwater away from property. Budget: \$150,000
2. Enclose facility with block walls. Budget: \$ 250,000

- **Mitigation to Terrorist Events:**

1. Block Wall Around Facility. Budget: \$250,000
2. Video Surveillance Camera and Alarm. Budget: \$20,000

Desert Heights Reservoir

- **Mitigation to Earthquake**

1. Generator and Transfer Switch. Budget: \$225,000
2. Flex Coupling. Budget: \$ 10,000
3. Seismic Shut Off Value. Budget: \$35,000

- **Mitigation to Flooding:**

1. Flood Control walls to direct floodwater away from property. Budget: \$150,000
2. Enclose facility with block walls. Budget: \$250,000

- **Mitigation to Terrorist Events:**

1. Block Wall Around Facility. Budget: \$250,000
2. Video Surveillance Camera and Alarm. Budget: \$20,000

6.3 Implementation Strategy

The implementation strategy is intended to successfully mitigate the hazards identified in this plan within a reasonable amount of time. The District is currently operating within its annual budget and has been fortunate that the recession of the past 10 years didn't cause major issues with the budget or revenue. The District's revenues have remained strong throughout the recession. Capital improvement projects have remained a priority. The District Staff will review the Mitigation Plan each year before obtaining the next years Fiscal Budget. The plan will also be reviewed by the Board of Directors for items to be included in the new fiscal budget. District staff will also look for ways to obtain Hazard Mitigation Grants each year to off-set the impacts to the fiscal budget and to show some relief for the residents of a disadvantaged community.

Mitigation Projects Funding Source

There is currently no mitigation money in the District's budget. The District will include mitigation into the budgeting process when funding becomes available and look at what mitigation projects could be funded in future budget cycles.

Timeframe

Over the next five years, the District will incorporate mitigation into all capital improvement projects that the District undertakes. The District has a Capital Improvement Program. When money is available for CIP, the District replaces outdated pipelines, reservoirs, wells, and buildings.

The District will apply for mitigation grants as the opportunities become available in the State of California, County of San Bernardino each year. The District will consider all mitigation items during the annual budget workshops, conducted each spring.

SECTION 7: PLAN MAINTENANCE

7.1 Monitoring, Evaluating, and Updating the Plan

The LHMP will be reviewed as part of the annual Budget workshop in the spring of each year. At that time, staff and elected Board of Directors will review funding and capital improvement projects to be included into the next fiscal year's budget. The District's budget is a public document and is reviewed by the public before the Board of Directors adopt the LMHP. A full review of the plan will be performed on 5-year intervals. At this time, the public will be asked to participate on the LHMP update committee.

7.2 Implementation through Existing Programs

Once the State of California OES and FEMA approve the LHMP, the District will incorporate the LHMP into capital improvement projects, capital replacement program, building design and any updates or repairs to the water distribution system. The District will submit Notice of Intent to the State of California to help facilitate funding opportunities in obtaining FEMA and State funding to mitigate hazards within the service area. The District's General Manager or his/her appointee will be responsible for the implementation of the LHMP and ensuring the LHMP recommended goals and objectives are met. The General Manager or his/her appointee will be responsible to place the LHMP on District's website and incorporate the LHMP into the annual budget workshops. The General Manager or his/her appointee will verify that the LHMP is updated and rewritten on a 5-year cycle.

7.3 Continued Public Involvement

The approved LHMP will be posted on the District's website with contact information. In the spring of each year at the agency's Board of Directors budget workshop, public comments will be taken in regard to the LHMP and projects will be considered that could possibly be included in the next year's budget. As new facilities are incorporated into the District, the LHMP will be updated to include new facilities, as well as new hazards, if warranted.

Appendix A
Internal/External Meeting Agendas,
Meeting Minutes and sign-in sheets

Appendix B
Board of Directors Meeting Minutes
LHMP Public Comment Period

Appendix C
Screen Shot of District
Website LHMP Page

Appendix D
Water Conservation Ordinance

Appendix E
Special District Incorporation
Documentation

2



**California Special
Districts Association**
Districts Stronger Together

RECEIVED

JUN - 5 2017

TWENTYNINE PALMS WATER DISTRICT

CALIFORNIA SPECIAL DISTRICTS ASSOCIATION

2017 BOARD ELECTIONS

MAIL BALLOT INFORMATION

Dear Member:

A mail ballot has been enclosed for your district's use in voting to elect a representative to the CSDA Board of Directors in your Network for Seat C.

Each of CSDA's six (6) networks has three seats on the Board. Each of the candidates is either a board member or management-level employee of a member district located in your network. Each Regular Member (district) in good standing shall be entitled to vote for one (1) person to represent its network.

We have enclosed the candidate information for each candidate who submitted one. Please vote for **only one** candidate to represent your network in Seat C, **unless otherwise noted on the actual ballot**, and be sure to sign, date and fill in your member district information. If any part of the ballot is not complete, the ballot will not be valid and will not be counted.

Please utilize the enclosed return envelope to return the completed ballot. Ballots must be received at the CSDA office at 1112 I Street, Suite 200, Sacramento, CA 95814 by **5:00pm on Friday, August 4, 2017**.

If you do not use the enclosed envelope, please mail in your ballot to:
California Special Districts Association
Attn: 2017 Board Elections
1112 I Street, Suite 200
Sacramento, CA 95814

Please contact Beth Hummel at 877.924.2732 or bethh@csla.net with any questions.



**California Special
Districts Association**

Districts Stronger Together

2017 CSDA BOARD CANDIDATE INFORMATION SHEET

The following information **MUST** accompany your nomination form and Resolution/minute order:

Name: Arlene Schafer

District/Company: Costa Mesa Sanitary District

Title: Secretary

Elected/Appointed/Staff: Elected

Length of Service with District: 20 Years

- 1. Do you have current involvement with CSDA (such as committees, events, workshops, conferences, Governance Academy, etc.):**

Current member of the CSDA Board of Directors, Legislative Committee, Membership Commission Chair, Fiscal Committee and attendee of Legislative Days, Annual Conference, SDLA certificate holder.

- 2. Have you ever been associated with any other state-wide associations (CSAC, ACWA, League, etc.):**

Member of CSAC and was a member of the League when serving on the City Council.

- 3. List local government involvement (such as LAFCo, Association of Governments, etc.):**

LAFCO member representing special districts, former Chair and Vice Chair of the ISDOC and currently serving as an Executive Committee member, OCCOG Board member.

- 4. List civic organization involvement:**

President of Harbor-Mesa Lions (2 terms), Costa Mesa Republican Federation of Women, OC Federation of Women, 3rd Vice President Ways & Means, Costa Mesa for Responsible Government member.

RE-ELECT ARLENE SCHAFER CALIFORNIA SPECIAL DISTRICTS ASSOCIATION SOUTHERN NETWORK

Arlene Schafer—Secretary Costa Mesa Sanitary District



As the former Mayor of the City of Costa Mesa, it has been an honor to serve as your representative on the California Special Districts Association (CSDA) for the past two years and now I humbly ask for your support to re-elect me to the Southern Network for another term. I believe my 28 years of experience as a local government leader that includes 20 years serving special districts in a variety of different capacities makes me the best candidate. In March, the Little Hoover Commission will release its report on special districts and its very likely the report will focus on the role Local Agency Formation Commissions play in special district formation and reorganization. CSDA was an active participant in the public hearings where commissioners learned how special districts provide vital services in our communities and are directly accountable to our voters and ratepayers. During my term as a member of the Board of Directors, CSDA successfully advocated for special districts by using the latest technology for outreach such as CSDA's campaign website, "Districts Make the Difference" and the new online video, "Districts Empower our Communities." I believe it is extremely important for CSDA to keep its foot on the pedal on advocacy by letting legislators, media, business leaders, schools and the general public know how important we are in our communities.

PREVIOUS CSDA EXPERIENCE

- ◆ Board President
- ◆ Board Vice President
- ◆ Board Secretary
- ◆ Finance Corporation
- ◆ Legislation Committee
- ◆ Fiscal Committee
- ◆ CSDA Membership Committee
- ◆ Recruitment & Planning Committee

Currently, I am serving on the Board of Directors for the Costa Mesa Sanitary District (CMSD) where I have been a Board member for 20 years. I am proud to be part of an organization that has been a District of Distinction since 2009, earned the Transparency Certificate of Excellence for four consecutive years and CMSD is one of few special districts in California that received Gold Recognition in Special District Governance.

If re-elected, I will continue to support CSDA's public outreach campaign about the essential services we provide and I will work collaboratively with CSDA Board of Directors and staff on providing essential training and professional development to help your agency succeed. Please vote for Arlene Schafer by **August 4, 2017**.



**California Special
Districts Association**
Districts Stronger Together

2017 CSDA BOARD CANDIDATE INFORMATION SHEET

The following information **MUST** accompany your nomination form and Resolution/minute order:

Name: Kristin Bloomer

District/Company: Desert Water Agency

Title: Secretary-Treasurer

Elected/Appointed/Staff: Elected

Length of Service with District: 12/4/15 - Current

1. Do you have current involvement with CSDA (such as committees, events, workshops, conferences, Governance Academy, etc.):

I recently attended the CSDA Legislative Days event.

2. Have you ever been associated with any other state-wide associations (CSAC, ACWA, League, etc.):

I am a member of ACWA and attend their conferences.

3. List local government involvement (such as LAFCo, Association of Governments, etc.):

City of Palm Springs Measure J Oversight Committee, Desert Water Agency Finance and Legislative Committees

4. List civic organization involvement:

Palm Springs SunUp Rotary Club, Palm Springs Woman's Club, St. Theresa

School PTA President, Desert Roundtable

****Candidate Statement** – Although it is not required, each candidate is requested to submit a candidate statement of no more than 300 words in length. **Any statements received in the CSDA office after May 31, 2017 will not be included with the ballot.**

Kristin Bloomer's Candidate Statement

I was first elected to the Desert Water Agency Board in 2015 and currently serve as Secretary-Treasurer on the Board of Desert Water Agency. However, service to my community has always played an important role in my life. I am dedicated to improving the quality of life for my community. Throughout my life, influence in community affairs and local government has grown. I have focused on the priority of shaping local government to strengthen the local and regional economies and create solutions to local and regional challenges. Southern California is faced with many challenges and I believe that challenges present opportunities, and that the Southern Network cannot afford to miss capitalizing upon those opportunities.

I am a longtime Palm Springs resident. My community service started early, when as a teenager, I volunteered with The Braille Institute and the National Charity League of Palm Springs.

My dedication to community service includes:

- Palm Springs Measure J Oversight Commission Vice-Chair
- Palm Springs Sunup Rotary Club past-President and current Assistant District Governor
- Founding President of the Desert Valley Women's Club
- Member of the Palm Springs Woman's Club
- St Theresa School Parent Teacher Group Board President
- Volunteer Volleyball Coach at Palm Springs High School
- Finance and Legislative Committee of Desert Water Agency



**California Special
Districts Association**

Districts Stronger Together

2017 CSDA BOARD CANDIDATE INFORMATION SHEET

The following information **MUST** accompany your nomination form and Resolution/minute order:

Name: John DeMonaco

District/Company: Chino Valley Independent Fire District

Title: Director

Elected/Appointed/Staff: Elected

Length of Service with District: 11 years

- 1. Do you have current involvement with CSDA (such as committees, events, workshops, conferences, Governance Academy, etc.):**

I am on the Legislative and Fiscal Committees

I have also served on the Education and Membership Committees

- 2. Have you ever been associated with any other state-wide associations (CSAC, ACWA, League, etc.):**

I am on the Board of Directors for the Fire Districts Association of California

- 3. List local government involvement (such as LAFCo, Association of Governments, etc.):**

N/A

- 4. List civic organization involvement:**

I am a member and past Chairman of the Rotary Club of Chino. I am also a Board Member of the Chino Rotary Foundation.

****Candidate Statement** – Although it is not required, each candidate is requested to submit a candidate statement of no more than 300 words in length. **Any statements received in the CSDA office after May 31, 2017 will not be included with the ballot.**

I am seeking election to a seat on the Board of Directors of the California Special Districts Association.

I have served on the Board of Directors of the Chino Valley Independent Fire District for 11 years, elected in 2006. I am very proud to state that our Fire District is the **first** fire district to receive the District of Distinction Accreditation from the Special Districts Leadership Foundation (SDLF). We have been a District of Distinction since 2008. We also have obtained a District of Transparency Certificate of Excellence. I have completed the SDLF Recognition of Special District Governance.

I serve on the CSDA Legislative and the Fiscal Committees. I have previously served on the CSDA Education and Membership committees.

I am a retired Fire Chief with 33 years of Fire Service experience. I have been involved in city, county, JPAs and special districts in various capacities. I am currently on the Board of Directors of the Fire Districts Association of California and also serve on their Conference Committee. I am a Past President of the Chino Rotary Club and past Chairman of the Chino Rotary Foundation.

I understand, and I am committed to legislative advocacy for special districts. Special Districts provide one of the most effective, efficient, and accountable forms of local service. It is vital that we continue to work together to influence and monitor policy decisions affecting California special districts.

My commitment, extensive experience, and education in public service and as a special district board member and policy-maker, provides me with the ability to effectively serve as a CSDA Board Member representing all California Special Districts. I look forward to your support!

Please contact me at (909) 816-8396 or email at jdemonaco@chofire.org.

John DeMonaco



California Special
Districts Association
Districts Stronger Together

2017 CSDA BOARD CANDIDATE INFORMATION SHEET

The following information **MUST** accompany your nomination form and Resolution/minute order:

Name: Michael Mack

District/Company: Rainbow Municipal Water District

Title: Director, Division 5

Elected/Appointed/Staff: Elected

Length of Service with District: 5 months

1. Do you have current involvement with CSDA (such as committees, events, workshops, conferences, Governance Academy, etc.):

I am the officially appointed RMWD representative for CSDA.

2. Have you ever been associated with any other state-wide associations (CSAC, ACWA, League, etc.):

I serve as the RMWD representative of both ACWA & CSDA.

3. List local government involvement (such as LAFCo, Association of Governments, etc.):

I worked for the city of San Marcos, CA for over 30 years as Parks Superintendent.

4. List civic organization involvement:

Past President of P.T.A.

*** SEE ATTACHED STATEMENT ***

****Candidate Statement** – Although it is not required, each candidate is requested to submit a candidate statement of no more than 300 words in length. **Any statements received in the CSDA office after May 31, 2017 will not be included with the ballot.**

ENDLESS POSSIBILITIES



My name is Michael Mack and I am honored to be seeking election to be on the Board of Directors of California Special Districts Association.

I was elected to the Rainbow Municipal Water District Board of Directors in December 2016 and appointed to serve as the District's representative at both ACWA and CSDA. My background includes a degree in horticulture and worked for the City of San Marcos for over thirty years. As the Parks Department Supervisor, I had many responsibilities including reviewing plans and inspection of new park and street median installations. I was both a Certified Playground Inspector and Irrigation Auditor. One of my main responsibilities was ensuring efficient usage of water resources. I calculated, determined, and programmed water requirements for the plant material for all parks and street medians within the City.

I have learned the importance of CSDA is we are the support system to help ensure efficient and productive services to both small and large communities throughout California at the local level of city governments. As your CSDA Board Member, I see endless possibilities and promise to tackle and meet the challenges our districts face. We all must work together for present and future needs for our special districts and by doing so we can and will achieve our goals. We must be proactive with our legislators and with this energy and commitment we can make the difference between success and failure.

I am very honored to have this chance to serve all of you and given this opportunity. I feel extensive service and experience in the public sector, I will work effortlessly to make those endless possibilities become reality.



California Special
Districts Association
Districts Stronger Together

2017 CSDA BOARD CANDIDATE INFORMATION SHEET

The following information **MUST** accompany your nomination form and Resolution/minute order:

Name: Richard Hall

District/Company: Mojave Water Agency

Title: Director, Division 3

Elected/Appointed/Staff: Elected

Length of Service with District: 17 years

1. Do you have current involvement with CSDA (such as committees, events, workshops, conferences, Governance Academy, etc.):

Currently serving on the Professional Development
Committee and Membership Committee

2. Have you ever been associated with any other state-wide associations (CSAC, ACWA, League, etc.):

Mojave water Agency is a member of ACWA

3. List local government involvement (such as LAFCo, Association of Governments, etc.):

Currently President of the Association of San Bernardino
County Special Districts

4. List civic organization involvement:

Member of the Elks Association, Kiwanis, Summit Valley
Property Owners

****Candidate Statement** – Although it is not required, each candidate is requested to submit a candidate statement of no more than 300 words in length. **Any statements received in the CSDA office after May 31, 2017 will not be included with the ballot.**

CANDIDATE STATEMENT

My name is Richard Hall and I am currently a Director for the Mojave Water Agency and President of the Association of the San Bernardino County Special Districts and have served as an elected official for more than 35 years in two Special District organizations. I am interested in the CSDA Board of Directors position for Southern District Seat C – here is a list of my qualifications:

- First-hand knowledge and experience to ensure that we have safe, quality drinking water.
- Knowledge and experience in Recreation and Parks through 20 years on the Hesperia Recreation and Parks Special District board and served as president four times.
- Knowledge and experience in Property Owners Association in Summit Valley, California where I helped to bring electricity and natural gas to the owners and served as president.
- Knowledge and experience in Engineering and Management at General Dynamics Program Office working with the Federal and State government.
- Reduced taxes through leadership as well as set policy to purchase quality water, build water discharge facilities, and given tax money back to residents who helped reduce water usage.
- Continue to fight to bring 21st century technology to our Agency to study in order to better ensure management of our water resources by advanced computer systems, deep monitor wells, and other state of the art methods.
- Worked closely with community leaders and residents for best policies and strategies including getting State and Federal funding for safe, drinkable water and other needed projects and programs.
- Support funding colleges and students for research and development for continued new resource solutions for present and future issues.

I know that more needs to be done and have plans to meet these challenges. Let us protect our future and provide leadership with someone who knows how.

3

TWENTYNINE PALMS WATER DISTRICT
72401 HATCH ROAD, TWENTYNINE PALMS, CA 92277-2935
760.367.7546 PHONE 760.367.6612 FAX

TO:	BOARD OF DIRECTORS
DATE:	JULY 21, 2017
FROM:	RAY KOLISZ, GENERAL MANAGER
SUBJECT:	REVIEW PROPOSALS AND AWARD BID TO PURCHASE ONE 2017 FORD F-250 4X4 TRUCK

SUMMARY

The District has requested proposals from four dealerships to purchase one 2017 Ford F-250 4x4 truck. The following are the results from the bids:

	<u>Total Cost</u>
Fiesta Ford	\$ 29,315.97
Sunrise Ford	\$ 29,652.59
Palm Springs Ford	\$ 33,190.36
Yucca Valley Ford	No response

Quotes include all applicable taxes, fees and delivery to Twentynine Palms Water District.

FISCAL IMPACT

There is \$100,000 allocated in the current budget for vehicle\equipment replacements.

RECOMMENDATION

Accept the bid from Fiesta Ford and approve the purchase of one 2017 F-250 4x4 truck in the amount of \$29,315.97.

4

TWENTYNINE PALMS WATER DISTRICT
72401 HATCH ROAD, TWENTYNINE PALMS, CA 92277-2935
760.367.7546 PHONE 760.367.6612 FAX

TO: BOARD OF DIRECTORS
DATE: JULY 21, 2017
FROM: RAY KOLISZ, GENERAL MANAGER
SUBJECT: DISCUSSION AND POSSILBE ACTION TO CHANGE THE DATE OF
THE SEPTEMBER 2017 BOARD OF DIRECTORS MEETING

SUMMARY

The California Special Districts Association (CSDA) Annual Conference and Exhibitor Showcase is being held the week of September 25, 2017 in Monterey California. This conference is in conflict with the regular scheduled Board of Directors meeting in September. In order to allow Directors and or certain staff members to attend this conference the Board Meeting will need to be changed to an earlier date.

RECOMMENDATION

Staff recommends changing the September 27, 2017 Board of Directors Meeting to September 20, 2017.

5

TWENTYNINE PALMS WATER DISTRICT
72401 HATCH ROAD, TWENTYNINE PALMS, CA 92277-2935
760.367.7546 PHONE 760.367.6612 FAX

TO:	BOARD OF DIRECTORS
DATE:	JULY 21, 2017
FROM:	RAY KOLISZ, GENERAL MANAGER
SUBJECT:	REVIEW AND APPROVE THE DETERMINATION OF ENVIRONMENTAL COMPLIANCE AND FILE A NOTICE OF EXEMPTION FOR THE WELL #11 REPLACEMENT PROJECT

BACKGROUND

The California Environmental Quality Act (CEQA) requires state and local government agencies to identify the significant environmental impacts and mitigate these impacts that might occur as a result of a project.

The proposed replacement of Well #11 is the replacement of an existing facility and is considered a "Project" under the CEQA guidelines.

The District contracted with TKDA to determine environmental compliance and has concluded that under CEQA guidelines that the project qualifies as a Categorical Exemption under Section 15302, Class 2 Replacement and Reconstruction. The determination for this exemption is outlined in the attached "Determination of Environmental Compliance Letter" attached for your review and approval.

RECOMMENDATION

Approve the Determination of Environmental Compliance and direct staff to file a Notice of Exemption for the Well 11 Replacement Project.

**Proposed Well #11 Replacement
Determination of Environmental Compliance
California Environmental Quality Act - Title 14 California Code of Regulations
Guidelines for Implementation**

BACKGROUND

Twentynine Palms Water District is planning to replace their existing Well #11 with a new well #11B constructed on the same parcel in Twentynine Palms, California.

The existing well was constructed in 1978 at a depth of 400 feet. The well became inoperative after a collapse in 2016. This well serves multiple pressure zones throughout the distribution system and provides water to approximately 6,000 people within in Twentynine Palms.

PROJECT DESCRIPTION

The Proposed well replacement (Project) involves drilling a new 500' well, and expanding the existing chain-link fence to encompass the new well site. The existing well will be retired in place.

Construction of the new well will require clearing an approximately 25' X 25' pad for the well and improve the existing access road to the well site in order to get the drilling rig to the site. Drilling is expected to 6-8 weeks.

Once construction is complete, the new well will be fenced, and electricity will be brought to the well site from the existing well site.

PROJECT PURPOSE AND NEED

The purpose of the project is to provide water to multiple pressure zones throughout the Twentynine Palms distribution system and provides water to approximately 6,000 people within those zones. The project is needed to continue providing a reliable water source to these residents.

REGULATORY SUMMARY

The California Environmental Quality Act (CEQA) is codified in Title 14 of the California Code of Regulations (14 CCR). This statute requires state and local agencies to identify the significant environmental impacts of their actions and to avoid or mitigate those impacts, if feasible. Guidelines for implementation of the statute are the regulations that explain and interpret the law for both the public agencies required to administer CEQA and for the public. They are found in the California Code of Regulations, in Chapter 3 of Title 14 "Guidelines for Implementation of the California Environmental Quality Act" (Guidelines).

Definition of a Project. Guidelines Section 15378 defines a Project as "the whole of an action, which has a potential for resulting in either a direct physical change in the environment, or a reasonably foreseeable indirect physical change in the environment, and that is any of the following:

(1) An activity directly undertaken by any public agency including but not limited to public works construction and related activities clearing or grading of land, improvements to existing public structures, enactment and amendment of zoning ordinances, and the adoption and amendment of local General Plans or elements thereof pursuant to Government Code Sections 65100-65700.

(2) An activity undertaken by a person which is supported in whole or in part through public agency contracts, grants, subsidies, loans, or other forms of assistance from one or more public agencies.

(3) An activity involving the issuance to a person of a lease, permit, license, certificate, or other entitlement for use by one or more public agencies.

The proposed replacement Well#111 is the replacement of existing facility and is considered a Project under the CEQA Guidelines.

Exemptions to CEQA. Section 21084 of the Public Resources Code also requires the Guidelines to include a list of classes of projects which have been determined not to have a significant effect on the environment and which shall, therefore, be exempt from the provisions of CEQA. Currently 33 classes of projects are identified in 14 CCR, Chapter 3, Article 19. Categorical Exemptions Sections 15300 to 15333 as not having a significant effect on the environment; as such, they are declared to be categorically exempt from the requirement for the preparation of environmental documents.

Exceptions to Exemptions. Guidelines Section 15300.2 also identifies exceptions in which a project that has been deemed to be consistent with a class of projects may have an impact on the environment, and therefore, not qualified under the exemption class. These exceptions include¹:

(a) Location. Classes 3, 4, 5, 6, and 11 are qualified by consideration of where the project is to be located -- a project that is ordinarily insignificant in its impact on the environment may in a particularly sensitive environment be significant. Therefore, these classes are considered to apply all instances, except where the project may impact on an environmental resource of hazardous or critical concern where designated, precisely mapped, and officially adopted pursuant to law by federal, state, or local agencies.

(b) Cumulative Impact. All exemptions for these classes are inapplicable when the cumulative impact of successive projects of the same type in the same place, over time is significant.

(c) Significant Effect. A categorical exemption shall not be used for an activity where there is a reasonable possibility that the activity will have a significant effect on the environment due to unusual circumstances.

(d) Scenic Highways. A categorical exemption shall not be used for a project which may result in damage to scenic resources, including but not limited to, trees, historic buildings, rock outcroppings, or similar resources, within a highway officially designated as a state scenic highway. This does not apply to improvements which are required as mitigation by an adopted negative declaration or certified EIR.

(e) Hazardous Waste Sites. A categorical exemption shall not be used for a project located on a site which is included on any list compiled pursuant to Section 65962.5 of the Government Code.

(f) Historical Resources. A categorical exemption shall not be used for a project which may cause a substantial adverse change in the significance of a historical resource.

Class 2 consists of replacement or reconstruction of existing structures and facilities where the new structure will be located on the same site as the structure replaced and will have substantially the same purpose and capacity as the structure replaced, including but not limited to:

¹ Note: Authority cited: Section 21083, Public Resources Code; References: Sections 21084 and 21084.1, Public Resources Code; Wildlife Aive v. Chickering (1977) 18 Cal.3d 190; League for Protection of Oakland's Architectural and Historic Resources v. City of Oakland (1997) 52 Cal.App.4th 896; Citizens for Responsible Development in West Hollywood v. City of West Hollywood (1995) 39 Cal.App.4th 925; City of Pasadena v. State of California (1993) 14 Cal.App.4th 810; Association for the Protection etc. Values v. City of Ukiah (1991) 2 Cal.App.4th 720; and Baird v. County of Contra Costa (1995) 32 Cal.App.4th 1464

(a) Replacement or reconstruction of existing schools and hospitals to provide earthquake resistant structures which do not increase capacity more than 50 percent.

(b) Replacement of a commercial structure with a new structure of substantially the same size, purpose, and capacity.

(c) Replacement or reconstruction of existing utility systems and/or facilities involving negligible or no expansion of capacity.

(d) Conversion of overhead electric utility distribution system facilities to underground including connection to existing overhead electric utility distribution lines where the surface is restored to the condition existing prior to the undergrounding.

EXEMPTION CONSISTENCY EVALUATION

The elements of the Proposed Well#11 Replacement could apply to Guidelines Section 15302, Class 2 "Replacement or Reconstruction" This class of projects is consists of replacement or reconstruction of existing structures and facilities where the new structure will be located on the same site as the structure replaced and will have substantially the same purpose and capacity as the structure replaced.

EXCEPTIONS TO EXEMPTION CONSISTENCY EVALUATION

As previously discussed, Guidelines Section 15300.2 also identifies exceptions in which a project that has been deemed to be consistent with a class of projects may have an impact on the environment, and therefore, not qualified under the exemption class. The criteria as outlined in Guidelines Section 15300.2 are provided in *italicized* type, and the consistency evaluation response is provided in standard type.

(a) Location. Classes 3, 4, 5, 6, and 11 are qualified by consideration of where the project is to be located -- a project that is ordinarily insignificant in its impact on the environment may in a particularly sensitive environment be significant. Therefore, these classes are considered to apply all instances, except where the project may impact on an environmental resource of hazardous or critical concern where designated, precisely mapped, and officially adopted pursuant to law by federal, state, or local agencies.

The project qualifies as Class 2. Therefore, the exemption is not applicable to this criterion.

(b) Cumulative Impact. All exemptions for these classes are inapplicable when the cumulative impact of successive projects of the same type in the same place, over time is significant.

The proposed project is the replacement of an existing facility, and will not have increased capacity. Therefore this project will not result in cumulative impacts to the environment.

(c) Significant Effect. A categorical exemption shall not be used for an activity where there is a reasonable possibility that the activity will have a significant effect on the environment due to unusual circumstances.

The Project replaces an existing facility on the same parcel. There are no activities that could be considered an unusual circumstance. Therefore, the Project will not result in a significant effect based on unusual circumstances.

(d) Scenic Highways. A categorical exemption shall not be used for a project which may result in damage to scenic resources, including but not limited to, trees, historic buildings, rock outcroppings, or similar resources, within a highway officially designated as a state scenic highway. This does not apply to improvements which are required as mitigation by an adopted negative declaration or certified EIR.

The project does not occur within or immediately adjacent to a highway. Therefore, there will be no impacts.

(e) Hazardous Waste Sites. A categorical exemption shall not be used for a project located on a site which is included on any list compiled pursuant to Section 65962.5 of the Government Code.

Section 65962.5(a)(1) requires that Department of Toxic Substance Control (DTSC) “shall compile and update as appropriate, but at least annually, and shall submit to the Secretary for Environmental Protection, a list of all the following:(1) [a]ll hazardous waste facilities subject to corrective action pursuant to Section 25187.5 of the Health and Safety Code (“HSC”).” The hazardous waste facilities identified in HSC § 25187.5 are those where DTSC has taken or contracted for corrective action because a facility owner/operator has failed to comply with a date for taking corrective action in an order issued under HSC § 25187, or because DTSC determined that immediate corrective action was necessary to abate an imminent or substantial endangerment. This is known as the “Cortese List.” This is a very small and specific subgroup of facilities and they are not separately posted on the DTSC or Cal/EPA’s website. The following databases that meet the “Cortese List” requirements were reviewed for this project.

Envirostore Database. HSC § 25356(b)(1) requires “a listing of hazardous substance release sites selected for, and subject to, a response action under this chapter.” HSC § 25356(b)(2) requires DTSC to “update the list of sites at least annually to reflect new information regarding previously listed sites or the addition of new sites requiring response action.” The implementing regulations provide that sites may be listed pursuant to HSC § 25356 if (a) they are not owned by the Federal Government and (b) a release or threatened release of hazardous substances has been confirmed by on-site sampling. (California Code of Regulations, Title 22, Section 67400.1). DTSC’s list of sites that meet those criteria as well as the criteria in HSC § 25356(c), is found in a report in DTSC’s “Envirostor” database. There are no sites listed on the EnviroStore database that are within the Project Parcel

Geotracker Database. Geotracker is the SWRCB’s database that manages potential hazardous sites to groundwater. The Geotracker database identifies a number of gas stations and other facilities that potentially handle hazardous waste or that are located throughout the Twentynine Palms area. The Database does not identify a site within 5 miles, there will be no impact. Therefore, the project will not be located on any site that has been identified in accordance with Section 65962.5 of the Government Code.

(f) Historical Resources. A categorical exemption shall not be used for a project which may cause a substantial adverse change in the significance of a historical resource.

There are no historic resources in the project vicinity. Therefore, the project will not cause a substantial adverse change in the significance of a historical resource.

ENVIRONMENTAL ANALYSIS DETERMINATION

The Proposed Well Replacement Project qualifies as a Class 2 Exemption as contained in Guidelines Section Class 24 “Replacement or Reconstruction” in that it is a replacement of an existing well within the same parcel.

(g) Replacement or reconstruction of existing schools and hospitals to provide earthquake resistant structures which do not increase capacity more than 50 percent.

The proposed project is not a school or hospital, and is therefore consistent with this criterion.

(h) Replacement of a commercial structure with a new structure of substantially the same size, purpose, and capacity.

The proposed project is not commercial structure, and is therefore consistent with this criterion.

(i) Replacement or reconstruction of existing utility systems and/or facilities involving negligible or no expansion of capacity.

The proposed project is the replacement of an existing utility system. The project replaces an existing well with no expansion of use or capacity. Therefore, the project is consistent with this criterion.

(j) Conversion of overhead electric utility distribution system facilities to underground including connection to existing overhead electric utility distribution lines where the surface is restored to the condition existing prior to the undergrounding.

The proposed project is not a conversion of electric system or facility, and is therefore consistent with this criterion.

ENVIRONMENTAL ANALYSIS CERTIFICATION

I find that the Project is consistent with 14 CCR, Chapter 3, Article 19, Section 15304, Class 2 “Replacement or Reconstruction” I have evaluated the criteria for the exceptions to the exemptions as identified in Guidelines Section 14 CCR, Chapter 3, Article 19, Section 15300.2 and found that there are no exceptions to the use of an exemption for the Project. Therefore, no further analysis is required. A Notice of Exemption will be filed with the State of California Clearinghouse and the County of San Bernardino Clerk of the Board.

PREPARED BY:

Name Lisa Patterosn – TKDA

Title Environmental Manager/Regulatory Specialist

(Date) July 18, 2017

TWENTYNINE PALMS WATER DISTRICT

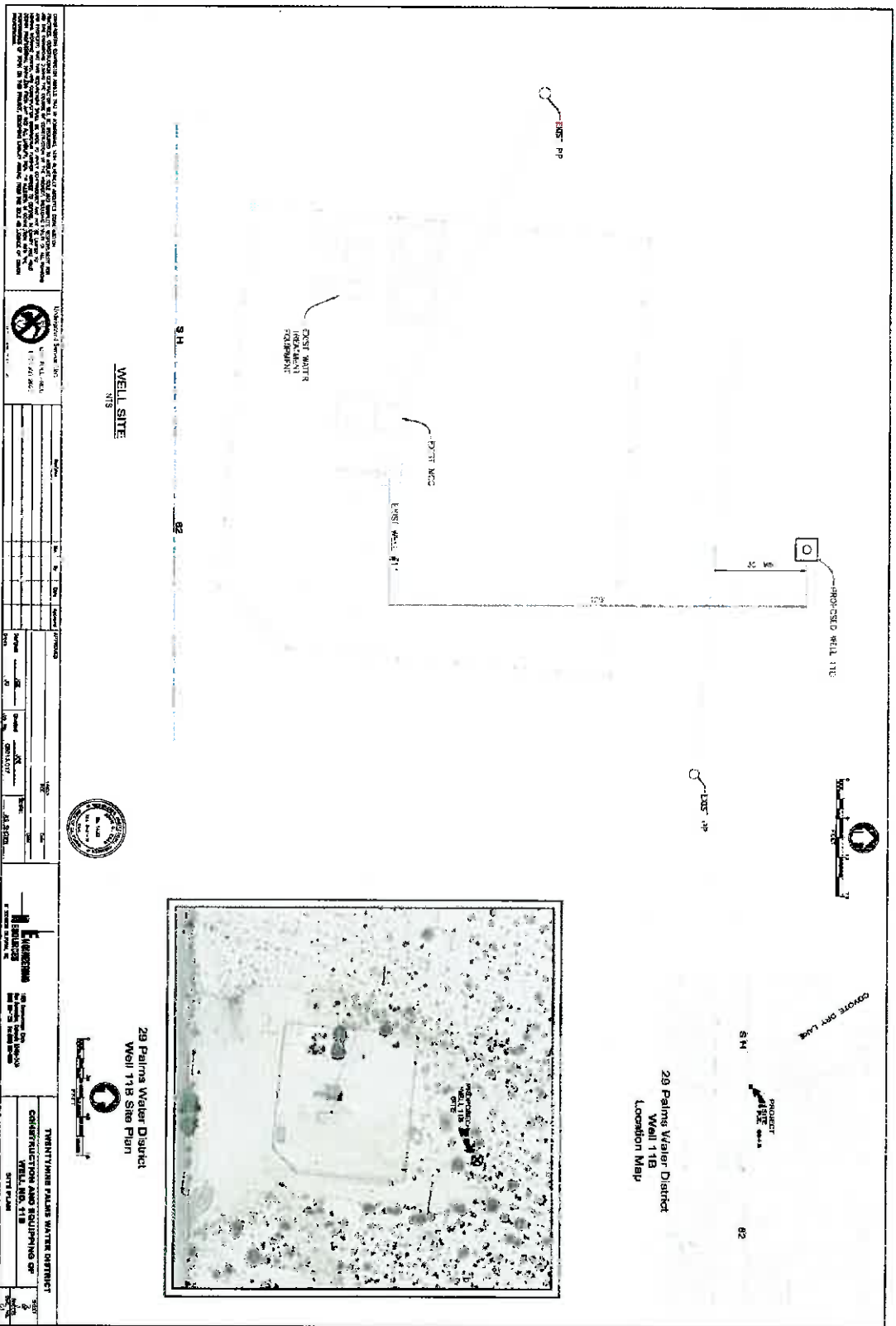
Signed: _____

Date: _____

Attachments:

- Figure 1: Project Location
- Figure 2 – Project Site Plan

Figure 2 -- Site Plan



6

TWENTYNINE PALMS WATER DISTRICT
72401 HATCH ROAD, TWENTYNINE PALMS, CA 92277-2935
760.367.7546 PHONE 760.367.6612 FAX

TO:	BOARD OF DIRECTORS
DATE:	JULY 21, 2017
FROM:	RAY KOLISZ, GENERAL MANAGER
SUBJECT:	DISCUSSION OF PHARMACEUTICAL DISPOSAL

BACKGROUND AND DISCUSSION

At the May 24th Board of Directors meeting, an audience member suggested the District look into becoming a disposal site for unused pharmaceuticals. The Board directed staff to research the possibility of the District becoming a drop off location for the disposal of such.

When staff contacted County Health Department, Environmental Health Department and the office of San Bernardino County Fire Marshall we were advised that it is illegal to accept controlled substances that might be dropped off if the District became a drop off location. In addition, the District would need to become a hazardous waste generator and follow all regulations that accompany such designation including annual permit and disposal fees. This subject was also discussed with our insurance provider and have been informed that this type of activity would put the District at an increased level of risk and liability.

Information received from a representative with the Marine Corps Air Ground Combat Center indicated that the Provost Marshall's Office (PMO) conducts a prescription drug take back twice a year aboard the Combat Center.

The County of San Bernardino offers a monthly Household Hazardous Waste Collection program that does accept personal medications. The location of this drop off site is at 62499 29 Palms Highway located in Joshua Tree and is open on every third Saturday of the month from 9 a.m. to 1 p.m.

7

**MINUTES OF A REGULAR MEETING OF THE BOARD OF DIRECTORS
OF THE TWENTYNINE PALMS WATER DISTRICT
72401 HATCH ROAD, TWENTYNINE PALMS, CA 92277**

JUNE 26, 2017 / 6:00 P.M.

Call to Order and Roll Call

President Moore called the meeting to order at 6:00 p.m., 72401 Hatch Road, Twentynine Palms, California. Those responding to roll call were Directors Bob Coghill, Carol Giannini, Suzi Horn, Sam Moore, and Roger Shinaver. Also present were General Manager Ray Kofisz, and Victoria Pinilla. District Secretary Cindy Fowlkes and Financial Consultant Cindy Byerrum were absent.

Pledge of Allegiance

Director Moore led the pledge.

Additions/Deletions to the Agenda

None

Public Comments

Ed Vallerand, of Twentynine Palms spoke regarding the city council meeting, signature of Memorandum of Understanding of sewage treatment plan between the city and marine core, not going for review by the city and water district, issue is that he's concerned about there not being a public review on it. Since it impacts us, he believes that the Water District and the public has a right to review it. He's concerned that it can affect our water table.

Local Hazard Mitigation Plan Open Comments

There were no comments from the public. The plan will be presented to the Board for approval next month. Upon review and approval from the State and FEMA, the plan will be adopted by the Board through resolution.

1. Public Hearing on Proposed Continuation of Water Availability Assessment
1.1 Board to Hear Public Testimony at This Time

Director Shinaver moved to open the Public Hearing at 6:01 p.m., seconded by Director Horn, and unanimously approved.

There being no public comments, Director Horn moved to close the public hearing at 6:03 p.m., seconded by Director Shinaver, and unanimously approved.

2. Consider Resolution 17-09 Continuing the Current Existing Level of Water Availability Assessments for Fiscal Year 2017-2018

Director Shinaver moved to approve Resolution 17-09 continuing the current existing level of water availability assessments for fiscal year 2017-2018, seconded by Director Giannini, and approved by the following roll call vote:

Ayes:	Directors Coghill, Giannini, Horn, Shinaver, and Moore
Noes:	None
Abstain:	None
Absent:	None

3. Consider Approval of Resolution 17-10 Adopting the Proposed Budget and Compensation Plan of the Twentynine Palms Water District for Fiscal Year 2017-2018

Director Coghill moved to approve Resolution 17-10 adopting the proposed budget and compensation plan of the Twentynine Palms Water District for fiscal year 2017-2018, seconded by Director Horn, and approved by the following roll call vote:

Ayes: Directors Coghill, Giannini, Horn, Shinaver, and Moore
Noes: None
Abstain: None
Absent: None

4. Consideration to Approve Resolution 17-11 Adopting a Debt Management Policy
Staff recommends adopting Resolution 17-11 as a requirement for applying for grant funding through the Drinking Water State Revolving Fund (DWSRF).

Director Horn made a motion to adopt Resolution 17-11, adopting a Debt Management Policy, seconded by Director Coghill, and approved by the following roll call vote:

Ayes: Directors Coghill, Giannini, Horn, Shinaver and Moore
Noes: None
Abstain: None
Absent: None

5. Review Bid Results and Approve Selection of Contractor for Vista Del Sol Asphalt Repair
A water main leak in the Vista Del Sol housing complex caused extensive damage to the asphalt parking lot. The District will be filing an insurance claim for reimbursement costs, minus deductible. Staff recommends awarding the bid to Medina Construction in the amount of \$45,441.00.

Director Shinaver made a motion to award the bid to Medina Construction in the amount of \$45,441, seconded by Director Giannini, and approved by the following roll call vote:

Ayes: Directors Giannini, Horn, Shinaver, and Moore
Noes: Director Coghill
Abstain: None
Absent: None

6. Discussion of Draft Employee Recognition Policy
The policy recognizes employees for length of service in five year increments. Length of Service certificates will be presented to the employee and an annual luncheon or dinner will be provided to recognize staff for the milestone achievements. The Board was in agreement to bring the policy back for review with the changes as discussed.

7. Utility Cost Management Report Related to District's Electric Accounts
Utility Cost Management performed a bill analysis on all the District's electric accounts provided by Southern California Edison. After reviewing the accounts, it was determined that there were no billing discrepancies, and the District has done an excellent job of managing consumption on its accounts and takes advantage of cost savings by running on off peak hours.

8. Approving Amendment to General Manager Employment Agreement
The agreement was amended to extend the termination date from June 30, 2019 to June 30, 2022, and the annual salary was increased 2.5% to \$159,900.

Director Shinaver made a motion to amend the General Manager employment agreement, seconded by Director Giannini, and approved by the following roll call vote:

Ayes: Directors Coghill, Giannini, Horn, Shinaver, and Moore
Noes: None
Abstain: None
Absent: None

9. Consent Calendar
▪ Minutes of a Regular Meeting held on May 24, 2017

▪ Audit List

Director Horn moved to approve the Consent Calendar, seconded by Director Shinaver, and approved unanimously.

10. Items Removed from the Consent Calendar for Discussion or Separate Action
None

11. Management Reports

11.1 Operations

The District responded to 28 Underground Service Alerts, had 0 water main leaks, 1 water meter leak, 1 service line leak, 0 fire hydrant repairs, performed 5 customer pressure checks, replaced 8 meters, replaced 2 customer gate valves, and installed 0 new services. Water production was down 20% as compared to the same month in 2013.

11.2 Finance

Mr. Kolisz reported the budget is tracking as expected.

11.3 General Manager

Mr. Kolisz reported the District will continue to work with its consultants at Ortega Strategies Group (OSG) to help influence legislative and regulatory policies and present the District's positions on such matters. The cathodic protection system has been installed on the 2400 reservoir. This technique will help control corrosion on the metal surfaces. The 2016 Consumer Confidence Report is being mailed out to customers. Several staff members attended two FEMA workshops at Big Horn Desert View Water Agency and participated in a table top emergency exercise. District staff will continue to train and procure supplies for the Emergency Response Plan (ERP).

12. Future Agenda Items and Staff Tasks/Directors' Comments and Reports

Director Horn commented about the proper disposal of medications to protect the groundwater and the District becoming a disposal drop off site.

13. Adjournment

On motion by Director Shinaver, seconded by Director Giannini, and approved by the Board, the meeting was adjourned at 6:50 p.m.

Kerron E. Moore, President
Board of Directors

Attest:

Ray Kolisz, Board Secretary
Twentynine Palms Water District

Twentynine Palms Water District

Check Date Range: 6/1/2017 thru 6/30/2017

Ck No	Ck Date	Payable To	Ck Amt	Ck Detail	GL Acct No	Description
8583	06/14/2017	Accela, Inc. #774375	10,851.50	1,370.00	100-600-0000-5408	Web Payments Online-bills
				9,481.50	100-600-0000-5408	Annual Maintenance 5/27/17 - 5/26/18
8584	06/14/2017	ACWA/JPIA	30,246.48	22,844.34	100-310-0000-5140	Health Benefits July 2017
				1,580.37	100-310-0000-5141	Health Benefits July 2017
				330.41	100-310-0000-5142	Health Benefits July 2017
				1,714.11	100-600-0000-5399	Health Benefits July 2017
				3,777.25	100-310-0000-5144	Health Benefits July 2017
8585	06/14/2017	Autozone Inc.	61.68	61.68	100-130-0000-5220	Shop Supplies-Grease
8586	06/14/2017	Customer Refund	25.31	25.31	100-000-0000-1000	Refund Check
8587	06/14/2017	Customer Refund	18.84	18.84	100-000-0000-1000	Refund Check
8588	06/14/2017	Best Best & Krieger	5,890.39	2,683.20	100-600-0000-5403	Professional Services May 2017
				3,147.60	100-600-0000-5403	Professional Services May 2017
				59.59	100-600-0000-5403	Professional Services May 2017
8589	06/14/2017	Customer Refund	55.23	55.23	100-000-0000-1000	Refund Check
8590	06/14/2017	Customer Refund	13.22	13.22	100-000-0000-1000	Refund Check
8591	06/14/2017	Customer Refund	1.21	1.21	100-000-0000-1000	Refund Check
8592	06/14/2017	Customer Refund	60.81	60.81	100-000-0000-1000	Refund Check
8593	06/14/2017	Builders Supply - 29 Palms	101.89	11.32	100-130-0000-5220	Misc. PVC Fittings.
				19.38	100-130-0000-5220	3/4" Hose Bib.
				17.18	100-130-0000-5220	Roach & Ant Spray.
				14.14	100-150-0000-5220	Misc. Electrical Fittings.
				0.30	100-130-0000-5220	Hillman product (washers)
				4.97	100-130-0000-5220	Hillman product (washers)
				18.50	100-130-0000-5228	Shop Supplies-Wood Drill Bits.
				16.10	100-130-0000-5222	Buckets for oil change T.P. Gen. #19
8594	06/14/2017	Burrtec Waste & Recycling Svcs	198.62	135.07	100-600-0000-5406	Hatch
				63.55	100-150-0000-5406	Amboy
8595	06/14/2017	Calpers	6,731.28	6,719.36	100-600-0000-5165	Annual Unfunded Accrued Liability
				11.92	100-600-0000-5165	Annual Unfunded Accrued Liability
8596	06/14/2017	Calpers	7,029.00	6,112.85	100-310-0000-5162	Retirement 5/21/17 - 6/3/17

Twentynine Palms Water District

Check Date Range: 6/1/2017 thru 6/30/2017

				447.23	100-310-0000-5167	Retirement 5/21/17 - 6/3/17
				468.92	100-310-0000-5166	Retirement 5/21/17 - 6/3/17
8597	06/14/2017	Customer Refund	23.53	23.53	100-000-0000-1000	Refund Check
8598	06/14/2017	Customer Refund	34.85	34.85	100-000-0000-1000	Refund Check
8599	06/14/2017	Customer Refund	68.33	68.33	100-000-0000-1000	Refund Check
8600	06/14/2017	Cdw Government	890.51	404.04	100-600-0000-5406	SonicWall Comprehensive Gateway Security subscription
				422.21	100-875-0000-6001	Lenovo Miix 310-10ICR 80SG-10.1"-Atom x5 78350 -2 GB RAM - 32 SS
				64.26	100-875-0000-6001	Trip Lite 200ft Cat6 Gig Solid Conductor Snagless Patch Cable RJ
8601	06/14/2017	Chem-Tech International Inc.	15,523.94	5,771.94	100-150-0000-5211	Load of Acid (Treatment Plant)
				9,752.00	100-150-0000-5220	Sodium Hydroxide (Load of Caustic)
8602	06/14/2017	Chris Nichols	100.00	75.00	100-130-0000-5226	Program UV-5R Radio
				25.00	100-130-0000-5226	Baofeng UV-5R Radio
8603	06/14/2017	Customer Refund	24.37	24.37	100-000-0000-1000	Refund Check
8604	06/14/2017	Clinical Lab of San Bern.	1,496.00	1,496.00	100-140-0000-5405	Samples May 2017
8605	06/14/2017	Customer Refund	29.11	29.11	100-000-0000-1000	Refund Check
8606	06/14/2017	Customer Refund	67.17	67.17	100-000-0000-1000	Refund Check
8607	06/14/2017	Customer Refund	60.74	60.74	100-000-0000-1000	Refund Check
8608	06/14/2017	Customer Refund	5.82	5.82	100-000-0000-1000	Refund Check
8609	06/14/2017	Customer Refund	27.99	27.99	100-000-0000-1000	Refund Check
8610	06/14/2017	Customer Refund	34.84	34.84	100-000-0000-1000	Refund Check
8611	06/14/2017	Customer Refund	36.01	36.01	100-000-0000-1000	Refund Check
8612	06/14/2017	Customer Refund	43.92	43.92	100-000-0000-1000	Refund Check
8613	06/14/2017	Desert Hardware	22.79	22.79	100-130-0000-5222	Buckets for oil change treatment plant gen. #19.
8614	06/14/2017	Customer Refund	57.25	57.25	100-000-0000-1000	Refund Check
8615	06/14/2017	E.H. Wachs	205.63	205.63	100-130-0000-5222	Veh. #40 rpm sender and sensor.
8616	06/14/2017	Customer Refund	32.44	32.44	100-000-0000-1000	Refund Check
8617	06/14/2017	Engineering Resources	892.50	892.50	100-850-0000-6001	Professional Services
8618	06/14/2017	Customer Refund	50.62	50.62	100-000-0000-1000	Refund Check
8619	06/14/2017	Fedex	4,450.00	4,450.00	100-150-0000-5211	Truckload Brokerage (shipping fee only)
8620	06/14/2017	Customer Refund	59.88	59.88	100-000-0000-1000	Refund Check
8621	06/14/2017	Customer Refund	6.79	6.79	100-000-0000-1000	Refund Check
8622	06/14/2017	Customer Refund	2.99	2.99	100-000-0000-1000	Refund Check

Twentynine Palms Water District

Check Date Range: 6/1/2017 thru 6/30/2017

8623	06/14/2017	Frontier Communications	154.08	154.08	100-150-0000-5203	Amboy
8624	06/14/2017	Customer Refund	25.54	25.54	100-000-0000-1000	Refund Check
8625	06/14/2017	GMC Electrical Inc.	16,968.37	16,968.37	100-850-0000-6001	Cathodic Protection (2400 Reservoir)
8626	06/14/2017	Customer Refund	47.72	47.72	100-000-0000-1000	Refund Check
8627	06/14/2017	Customer Refund	25.30	25.30	100-000-0000-1000	Refund Check
8628	06/14/2017	Customer Refund	26.48	26.48	100-000-0000-1000	Refund Check
8629	06/14/2017	Hd Supply Waterworks Ltd.	491.65	162.84	100-130-0000-5220	4" MJFLG ADAPTER USA CP C153
				138.00	100-130-0000-5220	4" MJ 90 BEND USA CP DI C153
				183.54	100-130-0000-5220	4" EBAAMEGALUG W/ACC 1104DEC EBAA SEAL GSKT & 4 BOLTS&NUTS
				7.27	100-130-0000-5220	S/C
8630	06/14/2017	Customer Refund	25.54	25.54	100-000-0000-1000	Refund Check
8631	06/14/2017	Customer Refund	543.02	543.02	100-000-0000-2000	AR Refund
8632	06/14/2017	Customer Refund	9.58	9.58	100-000-0000-1000	Refund Check
8633	06/14/2017	Customer Refund	39.88	39.88	100-000-0000-1000	Refund Check
8634	06/14/2017	Customer Refund	38.41	38.41	100-000-0000-1000	Refund Check
8635	06/14/2017	Home Depot Credit Services	765.86	419.15	100-850-0000-6001	Arrow dakota 10x8 metal shed
				346.71	100-130-0000-5220	Misc Field supplies
8636	06/14/2017	Customer Refund	53.43	53.43	100-000-0000-1000	Refund Check
8637	06/14/2017	Customer Refund	69.57	69.57	100-000-0000-1000	Refund Check
8638	06/14/2017	Kennedy/Jenks Consultants	2,882.39	2,882.39	100-600-0000-5412	Professional Services May 2017
8639	06/14/2017	Konica Minolta Premier	155.97	155.97	100-150-0000-5223	6/1/2017 - 6/30/2017
8640	06/14/2017	Customer Refund	60.81	60.81	100-000-0000-1000	Refund Check
8641	06/14/2017	Customer Refund	57.87	57.87	100-000-0000-1000	Refund Check
8642	06/14/2017	Customer Refund	10.98	10.98	100-000-0000-1000	Refund Check
8643	06/14/2017	Customer Refund	52.40	52.40	100-000-0000-1000	Refund Check
8644	06/14/2017	Customer Refund	14.77	14.77	100-000-0000-1000	Refund Check
8645	06/14/2017	Customer Refund	75.00	75.00	100-000-0000-1000	Refund Check
8646	06/14/2017	Mccall's Meter Sales & Service	972.60	972.60	100-120-0000-5406	Repair Treatment Flow Meter
8647	06/14/2017	Customer Refund	8.37	8.37	100-000-0000-1000	Refund Check
8648	06/14/2017	Customer Refund	41.13	41.13	100-000-0000-1000	Refund Check
8649	06/14/2017	Mcmaster-Carr Supply Co.	876.84	13.53	100-150-0000-5220	3190K731 DEIONIZED WATER, 1 GALLON BOTTLE
				390.55	100-150-0000-5220	5163K49 DESICCANT FOR 1/2 NPT, 25 SCFM @ 45 DEGREE F COMPRESSED

Twentynine Palms Water District

Check Date Range: 6/1/2017 thru 6/30/2017

				134.82	100-150-0000-5220	8282K73 FILTER ELEMENT FOR 1/2 AND 3/4 NPT COMPRESSED AIR FILTER
				20.08	100-150-0000-5220	4958K95 REPLACEMENT FILTER ELEMENT FOR 3/8, 1/2 AND 3/4 NPT
				304.00	100-150-0000-5220	5162K116 POLYESTER FELT FILTER BAG 100 MICRON, 7" DIAMETER X 32"
				13.86	100-150-0000-5220	6637T65 WATER FILTER CARTRIDGE 10" HEIGHT, 50 MICRONS
8650	06/14/2017	Napa Auto Parts	54.36	54.36	100-130-0000-5222	Veh. #44B Tail Light Brackets.
8651	06/14/2017	Customer Refund	7.34	7.34	100-000-0000-1000	Refund Check
8652	06/14/2017	Customer Refund	38.34	38.34	100-000-0000-1000	Refund Check
8653	06/14/2017	Office Supplies Plus Inc.	104.35	43.22	100-130-0000-5406	Sent out card reader for repair (pay meters)
				17.43	100-130-0000-5406	Return bad E.H wachs Valve trailer sensor
				43.70	100-130-0000-5406	Shipped out GPS for rental Fee
8654	06/14/2017	Customer Refund	55.15	55.15	100-000-0000-1000	Refund Check
8655	06/14/2017	Customer Refund	57.25	57.25	100-000-0000-1000	Refund Check
8656	06/14/2017	Customer Refund	50.42	50.42	100-000-0000-1000	Refund Check
8657	06/14/2017	Customer Refund	38.88	38.88	100-000-0000-1000	Refund Check
8658	06/14/2017	Pitney Bowes	458.85	458.85	100-600-0000-5223	3/30/2017 - 6/29/2017
8659	06/14/2017	Pitney Bowes Postage By Phone	500.00	500.00	100-600-0000-5302	Postage Meter Refill
8660	06/14/2017	Platinum Consulting Group	6,212.50	6,212.50	100-600-0000-5401	Monthly retainer May 2017
8661	06/14/2017	Customer Refund	13.05	13.05	100-000-0000-1000	Refund Check
8662	06/14/2017	Pro Security Systems	432.00	144.00	100-130-0000-5406	Quarterly Monitoring
				144.00	100-150-0000-5406	Quarterly Monitoring
				144.00	100-600-0000-5406	Quarterly Monitoring
8663	06/14/2017	Process Solutions Inc.	1,681.91	1,681.91	100-150-0000-5221	Acid washed, rebuilt micropump (treatment plant)
8664	06/14/2017	Prudential Overall Supply	471.89	48.35	100-130-0000-5253	Uniforms
				238.34	100-130-0000-5253	Uniforms
				136.85	100-130-0000-5253	Uniforms
				48.35	100-130-0000-5253	Uniforms
8665	06/14/2017	Customer Refund	28.03	28.03	100-000-0000-1000	Refund Check
8666	06/14/2017	Customer Refund	68.72	68.72	100-000-0000-1000	Refund Check
8667	06/14/2017	Customer Refund	1.21	1.21	100-000-0000-1000	Refund Check
8668	06/14/2017	S.C.E.	24,043.63	4,261.80	100-120-0000-5201	Booster TP-1
				1,104.10	100-120-0000-5201	Booster H1N, H2S
				65.18	100-110-0000-5201	Donnell

Twentynine Palms Water District

Check Date Range: 6/1/2017 thru 6/30/2017

				1,271.31	100-110-0000-5201	Well 16
				2,044.21	100-110-0000-5201	Well 17
				32.20	100-110-0000-5201	Well 4
				1,301.11	100-600-0000-5201	Hatch
				1,210.49	100-150-0000-5201	Plant
				27.67	100-110-0000-5201	Michel's
				48.26	100-110-0000-5201	Well 9 Booster 6A, 6B
				12,677.30	100-110-0000-5201	Well TP-1
8669	06/14/2017	Safety Compliance Company	1,050.00	750.00	100-130-0000-5406	Safety Consulting SetUp Fee (IIPP)
				300.00	100-130-0000-5406	IIPP Safety Orientation Meeting
8670	06/14/2017	Customer Refund	1.67	1.67	100-000-0000-1000	Refund Check
8671	06/14/2017	San Bernardino County	37.00	37.00	100-130-0000-5301	Monthly Assessor parcel map revisions June 2017
8672	06/14/2017	Satmodo LLC	64.94	64.94	100-600-0000-5203	Iridium Monthly Minute Plan
8673	06/14/2017	Customer Refund	69.18	69.18	100-000-0000-1000	Refund Check
8674	06/14/2017	Customer Refund	29.87	29.87	100-000-0000-1000	Refund Check
8675	06/14/2017	Customer Refund	14.25	14.25	100-000-0000-1000	Refund Check
8676	06/14/2017	Customer Refund	71.05	71.05	100-000-0000-1000	Refund Check
8677	06/14/2017	Customer Refund	3.22	3.22	100-000-0000-1000	Refund Check
8678	06/14/2017	Bob Stephenson	125.00	125.00	100-610-0000-5350	Video Recording board meeting
8679	06/14/2017	Customer Refund	309.50	309.50	100-130-0000-5330	Course reimbursement
8680	06/14/2017	SWRCB-DWOCP	105.00	105.00	100-130-0000-5242	Grade D5/Minatrea
8681	06/14/2017	SWRCB-DWOCP	105.00	105.00	100-130-0000-5242	Grade D5/Shragge
8682	06/14/2017	SWRCB-DWOCP	90.00	90.00	100-130-0000-5242	T3 Renewal/Kolisz
8683	06/14/2017	Customer Refund	37.56	37.56	100-000-0000-1000	Refund Check
8684	06/14/2017	The Pun Group	1,950.00	1,950.00	100-600-0000-5402	Professional Services
8685	06/14/2017	Customer Refund	17.25	17.25	100-000-0000-1000	Refund Check
8686	06/14/2017	TPX Communications	661.88	661.88	100-600-0000-5203	Hatch
8687	06/14/2017	Tractor Supply Credit Plan	935.23	935.23	100-130-0000-5228	Ground Harrows
8688	06/14/2017	Customer Refund	12.67	12.67	100-000-0000-1000	Refund Check
8689	06/14/2017	Underground Service Alert	54.00	54.00	100-130-0000-5406	36 New Tickets
8690	06/14/2017	United Cerebral Palsy Assoc.	14.77	14.77	100-160-0000-5406	Return Extra Invoice Inserts
8691	06/14/2017	Vagabond Welding Supply	45.00	45.00	100-130-0000-5220	Argon mix for Mig welder.

Twentynine Palms Water District

Check Date Range: 6/1/2017 thru 6/30/2017

8692	06/14/2017	Customer Refund	29.58	29.58	100-000-0000-1000	Refund Check
8693	06/14/2017	Customer Refund	48.25	48.25	100-000-0000-1000	Refund Check
8694	06/14/2017	Customer Refund	55.54	55.54	100-000-0000-1000	Refund Check
8695	06/14/2017	Customer Refund	37.21	37.21	100-000-0000-1000	Refund Check
8696	06/14/2017	Vwr Scientific Products Corp.	674.25	674.25	100-150-0000-5220	34111-705 Buffer TSAB II supply in pl btl 3.8L
8697	06/14/2017	Customer Refund	34.93	34.93	100-000-0000-1000	Refund Check
8698	06/14/2017	Customer Refund	25.93	25.93	100-000-0000-1000	Refund Check
8699	06/14/2017	Western Pump, Inc.	640.23	640.23	100-130-0000-5406	Annual lift inspection
8700	06/14/2017	Customer Refund	24.13	24.13	100-000-0000-1000	Refund Check
8701	06/19/2017	GoldStreet Designs	2,735.53	2,735.53	100-600-0000-5409	Development of Printing 2016 CCR
8702	06/28/2017	Richard Capelli 29 Palms Fencing	4,650.00	4,650.00	100-850-0000-6001	Fence For Well #12
8703	06/28/2017	Ansafone Contact Centers	139.23	139.23	100-160-0000-5406	Answering Service
8704	06/28/2017	Autozone Inc.	30.49	6.99	100-130-0000-5222	Veh. #15 Light Bulbs.
				3.49	100-130-0000-5222	Veh. #15 Light Bulb.
				13.34	100-130-0000-5220	Brake Fluid.
				6.67	100-130-0000-5220	Brake Fluid.
8705	06/28/2017	Customer Refund	70.58	70.58	100-000-0000-1000	Refund Check
8706	06/28/2017	Customer Refund	23.76	23.76	100-000-0000-1000	Refund Check
8707	06/28/2017	Beyond Software Solutions	420.00	420.00	100-600-0000-5406	IT Services
8708	06/28/2017	Customer Refund	85.14	85.14	100-000-0000-1000	Refund Check
8709	06/28/2017	Customer Refund	67.86	67.86	100-000-0000-1000	Refund Check
8710	06/28/2017	Bighorn-Desert View Water Agency	600.00	600.00	100-600-0000-5406	Emergency Response Training
8711	06/28/2017	BIRKSCO	1,495.00	1,290.00	100-130-0000-5220	Aqualoader Smart Cards, Start with number 521
				205.00	100-130-0000-5406	Repair small paymeter data transmission.
8712	06/28/2017	Customer Refund	32.61	32.61	100-000-0000-1000	Refund Check
8713	06/28/2017	Customer Refund	75.00	35.23	100-000-0000-1000	Refund Check
				39.77	100-000-0000-1000	Refund Check
8714	06/28/2017	Customer Refund	30.20	30.20	100-000-0000-1000	Refund Check
8715	06/28/2017	Calpers	7,147.84	6,215.84	100-310-0000-5162	Retirement 06/04/2017 - 06/17/2017
				455.12	100-310-0000-5167	Retirement 06/04/2017 - 06/17/2017
				476.88	100-310-0000-5166	Retirement 06/04/2017 - 06/17/2017
8716	06/28/2017	Customer Refund	43.68	43.68	100-000-0000-1000	Refund Check

Twentynine Palms Water District

Check Date Range: 6/1/2017 thru 6/30/2017

8717	06/28/2017	Carquest Auto Parts	23.22	23.22	100-130-0000-5222	T.P. Generator #19 Oil Filter.
8718	06/28/2017	Centurylink Business Services	26.83	26.83	100-600-0000-5203	Hatch
8719	06/28/2017	Customer Refund	22.76	22.76	100-000-0000-1000	Refund Check
8720	06/28/2017	Chem-Tech International Inc.	5,751.14	5,751.14	100-150-0000-5211	load of acid (treatment plant)
8721	06/28/2017	Customer Refund	66.78	66.78	100-000-0000-1000	Refund Check
8722	06/28/2017	Customer Refund	12.99	12.99	100-000-0000-1000	Refund Check
8723	06/28/2017	Customer Refund	37.24	37.24	100-000-0000-1000	Refund Check
8724	06/28/2017	CV Strategies	4,500.00	1,500.00	100-600-0000-5406	Strategic Communication Services Re: CCR
				3,000.00	100-600-0000-5406	Communication Services June 2017
8725	06/28/2017	Dangelo	1,489.08	475.33	100-850-0000-6001	Gate Valve 4" DIFLG MUE A-2362-06
				1,009.05	100-850-0000-6001	AIR VAC CRISPIN 4" AL41
				1.07	100-850-0000-6001	GSK 4" Ring Red Rubber CL125 1/8"
				3.63	100-850-0000-6001	Bolts & Nut Set 4" Plated GR A LESS/GSK
8726	06/28/2017	Customer Refund	75.00	75.00	100-000-0000-1000	Refund Check
8727	06/28/2017	Mike Ernst	1,264.67	1,264.67	100-600-0000-5406	Install Electronic Lock
8728	06/28/2017	Customer Refund	72.01	72.01	100-000-0000-1000	Refund Check
8729	06/28/2017	Frontier Communications	141.98	141.98	100-600-0000-5203	Hatch
8730	06/28/2017	Customer Refund	45.58	45.58	100-000-0000-1000	Refund Check
8731	06/28/2017	Customer Refund	36.71	36.71	100-000-0000-1000	Refund Check
8732	06/28/2017	GoldStreet Designs	2,474.85	2,474.85	100-600-0000-5409	CCR Reports 2017
8733	06/28/2017	Customer Refund	43.38	43.38	100-000-0000-1000	Refund Check
8734	06/28/2017	Home Depot Credit Services	1,379.54	433.91	100-110-0000-5220	CYCLONE 110 (WELL TP1)
				517.95	100-150-0000-5220	40 lb extra course solar salt 0000-806-151
				427.68	100-130-0000-5228	Misc. Tool set, Channellock,
8735	06/28/2017	Inland Water Works	883.18	883.18	100-000-0000-1499	HY2000-1441-260 12" HYMAX CPLG 860-56-0334-16 1315-1441
8736	06/28/2017	Customer Refund	35.00	35.00	100-000-0000-1000	Refund Check
8737	06/28/2017	Customer Refund	60.00	60.00	100-000-0000-1000	Refund Check
8738	06/28/2017	Customer Refund	52.52	52.52	100-000-0000-1000	Refund Check
8739	06/28/2017	Customer Refund	49.73	49.73	100-000-0000-1000	Refund Check
8740	06/28/2017	Konica Minolta Premier	318.03	318.03	100-600-0000-5223	06/01/2017 - 06/30/2017
8741	06/28/2017	Customer Refund	30.66	30.66	100-000-0000-1000	Refund Check
8742	06/28/2017	Customer Refund	42.29	42.29	100-000-0000-1000	Refund Check

Twentynine Palms Water District

Check Date Range: 6/1/2017 thru 6/30/2017

8743	06/28/2017	Customer Refund	13.79	13.79	100-000-0000-1000	Refund Check
8744	06/28/2017	Customer Refund	52.60	52.60	100-000-0000-1000	Refund Check
8745	06/28/2017	Customer Refund	53.45	53.45	100-000-0000-1000	Refund Check
8746	06/28/2017	Customer Refund	36.55	36.55	100-000-0000-1000	Refund Check
8747	06/28/2017	Customer Refund	50.11	50.11	100-000-0000-1000	Refund Check
8748	06/28/2017	Customer Refund	44.49	44.49	100-000-0000-1000	Refund Check
8749	06/28/2017	Customer Refund	16.17	16.17	100-000-0000-1000	Refund Check
8750	06/28/2017	Mccall's Meter Sales & Service	456.29	456.29	100-120-0000-5406	Repair flow meter (lupine booster)
8751	06/28/2017	Mcmaster-Carr Supply Co.	893.32	893.32	100-110-0000-5220	Vibration Meter
8752	06/28/2017	Minolta Business Systems	128.54	128.54	100-600-0000-5223	05/23/2017 - 06/22/2017
8753	06/28/2017	Napa Auto Parts	92.97	14.90	100-130-0000-5222	Veh. #37 Clearance Lamps.
				48.45	100-130-0000-5222	Veh. #37 Clearance Lights
				10.03	100-130-0000-5222	Veh. #12 Clearance Light.
				2.89	100-130-0000-5222	Veh. #12 Clearance Lens.
				11.61	100-130-0000-5220	Windshield Washer Fluid.
				5.09	100-130-0000-5222	Veh. #37 Reflectors.
8754	06/28/2017	Customer Refund	63.29	63.29	100-000-0000-1000	Refund Check
8755	06/28/2017	Customer Refund	18.18	18.18	100-000-0000-1000	Refund Check
8756	06/28/2017	Office Supplies Plus Inc.	171.02	122.23	100-150-0000-5406	Shipping Fee (Valve Trailer Hand Held)
				48.79	100-150-0000-5406	Shipping Fee (Treatment Plant Flow Meter)
8757	06/28/2017	Peterson's Custom Uphol-	65.00	65.00	100-130-0000-5222	Veh.#9 Seat Repair.
8758	06/28/2017	Prudential Overall Supply	471.89	48.35	100-130-0000-5253	Uniforms
				241.06	100-130-0000-5253	Uniforms
				48.35	100-130-0000-5253	Uniforms
				134.13	100-130-0000-5253	Uniforms
8759	06/28/2017	Customer Refund	33.37	33.37	100-000-0000-1000	Refund Check
8760	06/28/2017	Customer Refund	46.17	46.17	100-000-0000-1000	Refund Check
8761	06/28/2017	Customer Refund	53.37	53.37	100-000-0000-1000	Refund Check
8762	06/28/2017	Customer Refund	36.25	36.25	100-000-0000-1000	Refund Check
8763	06/28/2017	Customer Refund	56.24	56.24	100-000-0000-1000	Refund Check
8764	06/28/2017	S.C.E.	8,765.94	1,858.03	100-110-0000-5201	Well 6, 12
				856.70	100-120-0000-5201	Booster 11A, 11B

Twentynine Palms Water District

Check Date Range: 6/1/2017 thru 6/30/2017

				923.31	100-120-0000-5201	Booster Sullivan
				1,534.54	100-120-0000-5201	Booster Lupine
				326.55	100-110-0000-5201	Well 15
				2,329.59	100-110-0000-5201	Well 14
				51.40	100-120-0000-5201	D.H. Resv. & Hydro
				41.63	100-110-0000-5201	Well 11
				793.00	100-120-0000-5201	Booster Two Mile
				51.19	100-110-0000-5201	Well 9 Booster 6A, 6B
8765	06/28/2017	Customer Refund	75.00	75.00	100-000-0000-1000	Refund Check
8766	06/28/2017	Shoplet.Com	510.61	510.61	100-600-0000-5301	Office Supplies
8767	06/28/2017	Susan L. Simmons	575.00	575.00	100-600-0000-5406	Janitorial Services
8768	06/28/2017	Southern Calif. Gas Co.	1.92	1.92	100-600-0000-5202	Hatch
8769	06/28/2017	Spectrum Business	269.97	129.99	100-150-0000-5203	Plant
				139.98	100-600-0000-5203	La Luna
8770	06/28/2017	Customer Refund	59.03	59.03	100-000-0000-1000	Refund Check
8771	06/28/2017	Customer Refund	43.38	43.38	100-000-0000-1000	Refund Check
8772	06/28/2017	The Pun Group	7,800.00	7,800.00	100-600-0000-5402	Professional Services
8773	06/28/2017	Union Bank	3,543.77	266.03	100-110-0000-5220	Transducer (Well #1) (DWYER) 628 S83053902 628-75-CH-P1-E5-S1
				174.65	100-600-0000-5301	Incident Command Vests
				618.24	100-600-0000-5330	Ayres Hotel - Staff
				300.00	100-600-0000-5330	Cla Val Registration
				64.15	100-600-0000-5301	Print Cartridges for check scanner
				50.00	100-600-0000-5330	CSDA Brown Act Training
				243.56	100-600-0000-5301	CSDA 2017 Policies Handbook
				88.00	100-600-0000-5406	Microsoft
				28.65	100-600-0000-5330	Meeting
				34.98	100-600-0000-5301	Supplies
				114.95	100-600-0000-5406	Web
				290.46	100-130-0000-5226	Safety
				397.50	100-130-0000-5226	Safety
				320.52	100-600-0000-5330	lodging
11.97	100-600-0000-5301	filters				

Twentynine Palms Water District

Check Date Range: 6/1/2017 thru 6/30/2017

				16.00	100-600-0000-5330	travel
				15.48	100-600-0000-5330	travel
				42.55	100-600-0000-5330	fuel
				166.08	100-130-0000-5242	Certification Training
				300.00	100-130-0000-5228	Adapter from Derek Weaver for Tire Balancer.
8774	06/28/2017	Usa Blue Book	853.47	853.47	100-150-0000-5220	Gli phd differential ph sensor ryton body 15 ft cable (pd1r1)
8775	06/28/2017	Vagabond Welding Supply	128.33	128.33	100-130-0000-5222	Trailer #44B Metal for Ramps.
8776	06/28/2017	Customer Refund	12.76	12.76	100-000-0000-1000	Refund Check
8777	06/28/2017	Verizon Wireless	292.84	292.84	100-600-0000-5203	Wireless
8778	06/28/2017	Customer Refund	17.13	17.13	100-000-0000-1000	Refund Check
8779	06/28/2017	Satmodo LLC	64.94	64.94	100-600-0000-5203	Iridium Monthly Minute Plan
			Total	\$214,168.25		

9

9.1

TWENTYNINE PALMS WATER DISTRICT

72401 Hatch Road/P. O. Box 1735
Twentynine Palms, CA 92277-1000
PHONE (760) 367-7546 FAX (760) 367-6612

TO: Board of Directors
FROM: Mike Minatrea, Operations Superintendent
DATE: July 17, 2017
SUBJECT: Management Report

A. The Operations and Maintenance Department performed the following tasks during the month of June 2017:

1. Responded to 20 Underground Service Alerts
2. Responded to and repaired
 - a. 0 water main leaks
 - b. 4 water meter leak
 - c. 1 service line leak
 - d. 1 fire hydrant repair/maintenance
3. Installed 5 new services
4. Replaced 8 customer gate valves
5. Performed 5 leak audits
6. Painted 0 fire hydrants
7. Performed 7 customer pressure checks
8. Replaced 12 water meters
9. Tested and exercised emergency generators
10. Sounded wells for June
11. 0 water waste complaints reported

B. The following customer service tasks were performed:

1. 143 work orders were generated from reading meters
2. 44 work orders were generated from billing variance list
3. 440 work orders were generated for turn on or turn off
4. 374 termination notices were distributed
5. 33 non-pay turn offs were performed
6. 47 extensions were granted
7. 18 extensions were shut off for non-payment
8. 1 payment schedules have been granted
9. 0 payment schedules failed, total outstanding \$0
10. 14 customer requests and 7 complaints were logged and investigated

C. Valve and Hydrant Maintenance Update

	Valves Exercised (Began 06/16)	Dead Ends Flushed (Began 7/16)
Current Month	0	13
Year to Date	*2,379	488

*Triennial cycle

D. Status of Cross-Connection Control Program (Quarterly)

	In District	2017 Test/Surveys
Cross-Connection Devices	340	332

TWENTYNINE PALMS WATER DISTRICT
JUNE WATER QUALITY AND ENGINEERING REPORT

1. **ENGINEERING**

A. No items to report.

2. **WATER QUALITY**

A. **Chlorine Levels:** Average levels maintained in the storage and distribution system ranged from a low of 0.10 mg/L to a high of 0.26 mg/L. Chlorination point (the point where chlorine is introduced into the distribution system) averages ranged from 0.25 mg/L to 0.66 mg/L.

B. **Bacteria Samples:** A total of 38 routine bacteria samples were collected at test points for the storage and distribution system during this past month. In addition 6 special bacteria samples were collected. All routine and special samples indicated ABSENT for Colilert.

C. **Fluoride Samples:** A total of 15 fluoride samples were collected at established test points for the storage and distribution system, and 6 fluoride samples were taken from potable water production wells. Fluoride levels in the distribution system ranged from a low of .71 mg/L to a high of 1.8 mg/L. Fluoride measurements collected at the wells ranged from a low of 0.31 to a high of 1.9 mg/L.

D. **General Physical:** A total of 14 general physical samples were collected from established locations as a part of routine testing requirements. Levels reported for color are <3.0, 1 for threshold odor and <0.1 – 0.7 for turbidity.

TWENTYNINE PALMS WATER DISTRICT
Water Production Report
FY 2016/2017

Groundwater Source													
	Mesquite Springs Basin	Fortynine Palms Basin	Eastern Basin	Indian Cove Basin	Total Produced	Total Prior Yr	%Increase Decrease prior year	%Increase Decrease from 2013	New Service	Active Account	Prior Year	%Increase (Decrease)	Main Leaks
July	102.055	98.483	38.624	42.803	281.965	249.190	13.15%	-9.10%	0				0
August	122.969	83.600	31.708	37.009	275.286	250.936	9.90%	-14.5	1	7,703	7,479	3.00%	0
Sept.	104.147	81.688	26.380	29.339	241.554	212.452	15.20%	-1%	0				0
October	103.117	66.705	20.659	23.842	214.323	186.181	15.11%	-0.80%	0	7,610	7,500	1.46%	0
Nov.	87.54	60.014	18.818	19.413	185.785	173.441	7.10%	-0.80%	0				1
Dec.	98.666	43.611	18.941	8.444	169.662	159.201	6.50%	3%	3	7,576	7,497	0.15%	2
Jan.	110.181	23.134	7.195	3.034	143.544	140.916	-2.00%	-25%	0				2
Feb.	88.929	34.546	12.041	10.774	146.290	157.930	-7.40%	-12%	0	7,535	N/A		1
March	128.362	34.399	11.921	5.685	180.367	183.431	-1.70%	-14%	0				0
April	124.923	49.434	16.775	1.104	192.266	180.901	6.00%	-32%	2	7,659	7,569	1.20%	0
May	134.653	52.548	17.539	17.043	221.783	220.759	0.45%	-20%	0				0
June	126.524	86.639	28.633	26.727	268.523	261.340	2.75%	-10.00%	5	7,731	7,680	0.67%	0
Totals	1332.066	714.801	249.234	225.217	2521.348	2376.678	6.09%		11				6

Production Totals Expressed in Acre Feet

NOTE: Year to Date Mesquite Springs Basin regeneration production of **18.462** acre feet = **1.37%** treatment loss.

Total Meters in District = 8,087

9.2

TWENTYNINE PALMS WATER DEPARTMENT

FINANCIAL REPORT

For The Month Of

May 2017

***PRELIMINARY -SUBJECT TO YEAR-END
AND AUDIT ADJUSTMENTS***

**TWENTYNINE PALMS WATER DEPARTMENT
STATEMENT OF INVESTMENTS AND RESERVES
For the Period Ending May 31, 2017
(Unaudited)**

<u>Operating Funds & Internal Reserves:</u>	<u>Prior Balance</u>	<u>Deposits</u>	<u>Disbursements</u>	<u>Current Balance</u>	<u>Market</u>
Operating Funds - LAIF	\$ 2,115,007	\$ -	\$ -	\$ 2,115,007	\$ 2,115,474
Election Fund Reserve - LAIF	20,925	-	-	20,925	20,929
Internal Operating Reserve - LAIF	165,701	-	-	165,701	165,738
Internal Debt Retirement Reserve - LAIF	-	-	-	-	-
Capital Funds for Primary Infrastructure - LAIF	52,056	-	-	52,056	52,068
Capital Funds for Secondary Infrastructure - LAIF	47,411	-	-	47,411	47,421
Investment Funds - CalTrust	1,005,502	935	-	1,006,437	1,006,659
Total Investments	\$ 3,406,602	\$ 935	\$ -	\$ 3,407,537	\$ 3,408,290

CERTIFICATION

I certify that (1) all investment actions executed since the last report have been made in full compliance with the District's Investment Policy and, (2) the District will meet its expenditure obligations for the next six months as required by California Government Code Sections 53646(b)(2) and (3), respectively.

Cindy Byerrum, CPA
Contract CPA

*** Market values are adjusted on this report on a quarterly basis and recorded in the District's financials statements at the end of the fiscal year*

**Twentynine Palms Water Department
Statement of Revenues and Expenses
For the Period Ending May 31, 2017
(Unaudited)**

	May 2017	April 2017	YTD	Budget	YTD 92%	Prior YTD
1 Operating Revenues	\$ 310,567	\$ 304,421	\$ 3,423,408	\$ 3,799,900	90%	\$ 3,161,632
2 Non-Operating Revenues	57,190	68,586	713,559	663,400	108%	608,947
Total Revenue Available to						
3 Fund Operations & Capital/R&R	367,757	373,007	4,136,968	4,463,300	93%	3,770,579
4 Operating Expenses	302,743	251,745	2,994,403	3,235,304	93%	2,649,034
5 Non-Operating Expenses	14,788	14,788	162,658	177,309	92%	1,449,918
Net Revenues Available to Fund Capital						
6 Related Expenditures	50,226	106,474	979,906	1,050,687	93%	(328,374)

No assurance is provided on these financial statements.

The financial statements do not include a statement of cash flows.

Substantially all disclosures required by accounting principles generally accepted in the United States are not included.

Twentynine Palms Water Department
Detail Statement of Revenues and Expenses
For the Period Ending May 31, 2017
(Unaudited)

	May 2017	April 2017	YTD	Budget	YTD 92%	Prior YTD
1 Operating Revenues						
2 Water Sales	\$ 206,522	\$ 198,256	\$ 2,318,059	\$ 2,529,800	92%	\$ 2,001,778
3 RTS	95,341	95,525	998,346	1,161,200	86%	1,057,182
4 Other Operating Revenue	8,705	10,640	107,003	108,900	98%	102,671
5 Total Operating Revenues	310,567	304,421	3,423,408	3,799,900	90%	3,161,632
6 Non-Operating Revenues						
7 Capital Impact Fees	-	5,200	7,150	4,000	179%	6,947
8 Water Availability Assessment	49,258	49,258	541,842	591,100	92%	541,842
9 Interest Revenue	935	7,188	22,808	37,500	61%	17,262
10 Other Penalties	2,086	3,150	25,250	22,600	112%	23,929
11 Reimbursed Expenses	504	3,726	13,362	4,600	290%	8,942
12 Other Non-Operating Revenue	4,408	64	103,148	3,600	2865%	10,025
13 Total Non-Operating Revenues	57,190	68,586	713,559	663,400	108%	608,947
14 Total Revenues	367,757	373,007	4,136,968	4,463,300	93%	3,770,579
15 Operating Expenditures						
16 Source of Supply						
17 Labor & Benefits	715	1,054	9,158	7,800	117%	7,627
18 Direct Expenses	18,277	38,218	280,356	292,670	96%	213,937
19 Total Source of Supply	18,992	39,272	289,514	300,470	96%	221,564
20 Pumping						
21 Labor & Benefits	-	-	900	100	900%	329
22 Direct Expenses	13,701	10,160	100,713	109,100	92%	93,709
23 Total Pumping	13,701	10,160	101,612	109,200	93%	94,038
24 Transmission & Distribution						
25 Labor & Benefits	42,625	45,872	566,627	600,320	94%	343,177
26 Direct Expenses	26,263	15,185	226,478	294,800	77%	214,706
27 Total Transmission & Distribution	68,888	61,057	793,105	895,120	89%	557,883
28 Treatment Wells						
29 Labor & Benefits	2,813	2,716	32,772	41,000	80%	37,005
30 Direct Expenses	2,444	2,219	21,370	29,349	73%	24,133
31 Total Treatment Wells	5,257	4,934	54,142	70,349	77%	61,137
32 Treatment Facility						
33 Labor & Benefits	14,408	14,135	135,187	161,900	84%	140,546
34 Direct Expenses	64,681	27,739	361,804	382,865	94%	363,931
35 Total Treatment Facility	79,089	41,874	496,991	544,765	91%	504,477
36 Customer Accounts						
37 Labor & Benefits	12,087	10,326	132,629	132,800	100%	114,071
38 Direct Expenses	13,466	129	37,722	33,400	113%	34,802
39 Total Customer Accounts	25,553	10,455	170,351	166,200	102%	148,873
40 General Administration						
41 Outside Services	18,603	18,410	255,977	290,200	88%	215,929
42 Direct Expenses	16,650	18,440	184,463	190,300	97%	155,690
43 Fire Department Reimbursements	-	-	-	-	0%	(50,380)
44 Total General Admin.	35,252	36,850	440,440	480,500	92%	321,239

Twentynine Palms Water Department
Detail Statement of Revenues and Expenses
For the Period Ending May 31, 2017
(Unaudited)

	May 2017	April 2017	YTD	Budget	YTD 92%	Prior YTD
45 Employee Salaries						
46 Direct Labor	80,047	79,273	1,001,752	1,053,100	95%	814,149
47 Less Transfer to Operations	59,602	58,662	743,971	785,400	95%	543,761
48 Total General & Admin. Salaries	20,445	20,611	257,781	267,700	96%	270,388
49 Employee Benefits						
49 Health Benefits	5,438	1,354	55,484	72,700	76%	73,683
50 Payroll Taxes	10,381	12,580	163,990	156,200	105%	249,789
51 Retirement Expenses	19,100	12,073	155,520	157,500	99%	130,346
52 Total Employee Benefits	34,919	26,007	374,994	386,400	97%	453,818
53 Board of Directors						
54 Directors' Fees	625	525	9,075	7,400	123%	5,650
55 Direct Expenses	22	-	6,398	7,200	89%	9,967
56 Total Board of Directors	647	525	15,473	14,600	106%	15,617
57 Total Operating Expenditures	302,743	251,745	2,994,403	3,235,304	93%	2,649,034
58 Non-Operating Expenditures						
59 Debt Service, Principle	-	-	-	-	0%	-
60 Debt Service, Interest	-	-	-	-	0%	-
61 Total Debt Service	-	-	-	-	0%	-
62 Depreciation Expense	-	-	-	-	0%	1,301,117
63 Unfunded PERS	6,740	6,740	74,135	80,738	92%	62,132
64 Unfunded OPEB Liability	8,048	8,048	88,523	96,571	92%	86,670
65 Total Non-Operating Expenditures	14,788	14,788	162,658	177,309	92%	1,449,918
66 Total Expenditures	317,531	266,533	3,157,062	3,412,613	93%	4,098,953
Net Revenues Available to Fund Capital						
67 Related Expenditures	50,226	106,474	979,906	1,050,687	93%	(328,374)

No assurance is provided on these financial statements.

The financial statements do not include a statement of cash flows.

Substantially all disclosures required by accounting principles generally accepted in the United States are not included.

**Twentynine Palms Water Department
Special Revenue Fund
For the Period Ending May 31, 2017
(Unaudited)**

	<u>May 2017</u>	<u>April 2017</u>	<u>YTD</u>	<u>Budget</u>	<u>YTD 92%</u>	<u>Prior YTD</u>
1 Tower Revenues	\$ 8,904	\$ 13,268	\$ 110,436	\$ 117,400	94%	\$ 115,480
2 Less Transfers Out to Fire	\$ -	\$ -	\$ -	\$ -	N/A	\$ (57,740)
3 Less Transfers Out To Water	\$ (5,570)	\$ (9,935)	\$ (73,769)	\$ (77,400)	95%	\$ (57,740)
4 Transfer to PARS Trust	\$ (3,333)	\$ (3,333)	\$ (36,667)	\$ (40,000)	92%	\$ -
Ending Balance To Retain In LAIF	<u>\$ -</u>	<u>\$ -</u>	<u>\$ -</u>	<u>\$ -</u>		<u>\$ -</u>

Twentynine Palms Water Department
Carryover CIP/Current CIP and R&M/Capital Outlay
For the Period Ending May 31, 2017
(Unaudited)

Carryover Capital Approved in Previous Years	Budget FY 16/17	Current Year Expenditures	Remaining Budget / (Over Budget)
District Projects			
1 USGS Study	150,000	\$ 3,250	146,750
2 Hazard Mitigation Plan	30,000	20,000	10,000
3 Treatment Plant Pond 3	-	33,770	(33,770)
4 Salt Nutrient Monitoring Wells	100,000	9,965	90,035
5 Ttl Carryover Capital Approved in Previous Years	280,000	66,985	213,015
Repairs, Rehabilitation, & Maintenance			
6 Plant 6 Electrical and Well Upgrade	250,000	125,444	124,556
7 Emergency Repairs, Unspecified	50,000	28,530	21,470
8 Repiping/Distribution System Upgrades	50,000	16,237	33,763
9 Reservoir Recoating and/or Cathodic Protection	175,000	17,294	157,706
10 Administrative Office Roof Repair	30,000	-	30,000
11 Administrative Office Asphalt Seal Coat	20,000	14,754	5,246
12 Fluoride Plant Instrumentation\Coating	30,000	16,277	13,723
13 Well 11B	-	4,463	(4,463)
14 Total Repairs & Maintenance	605,000	223,000	382,000
Capital Outlay			
15 Vehicle Replacements	50,000	51,020	(1,020)
16 Computer/Technology Replacements	40,000	27,585	12,415
17 GIS	50,000	22,065	27,935
18 Fencing Upgrade	15,000	-	15,000
19 One-Time Existing Conditions Sampling Event	25,000	-	25,000
20 Total Capital Outlay	180,000	100,670	79,330
21 TOTAL	\$ 1,065,000	\$ 390,655	\$ 674,345

9.3

**NO
MATERIAL
PROVIDED**